



**NRI INSTITUTE OF TECHNOLOGY**  
**AUTONOMOUS**

Accredited : NAAC with "A", NBA (CSE, ECE & EEE)

Approved by AICTE, New Delhi & Permanently affiliated to JNTUK, Kakinada  
Pothavarappadu, Agripalli Mandalam, Krishna Dt., Andhra Pradesh - 521212

URL : [www.nrigroupofcolleges.ac.in](http://www.nrigroupofcolleges.ac.in), Ph : 0866 2469666, Email : [principal@nriit.edu.in](mailto:principal@nriit.edu.in)



# **National Assessment and Accreditation Council (NAAC)**

## **Student Satisfaction Survey**

### **Key Indicator - 2.7.1**

**Under Criterion II of Teaching – Learning and Evaluation  
(From Students)**



**NRI INSTITUTE OF TECHNOLOGY**

**AUTONOMOUS**

Accredited : NAAC with "A", NBA (CSE, ECE & EEE)

Approved by AICTE, New Delhi & Permanently affiliated to JNTUK, Kakinada  
Pothavarappadu, Agiripalli Mandalam, Krishna Dt., Andhra Pradesh - 521212

URL : [www.nrigroupofcolleges.ac.in](http://www.nrigroupofcolleges.ac.in), Ph : 0866 2469666, Email : [principal@nriit.edu.in](mailto:principal@nriit.edu.in)



## NAAC- AQAR (2017-18)

For the NAAC AQAR (2017-18), Students Satisfaction Survey (SSS) was conducted among the students of the college through the college website. The questionnaire has been framed based on NAAC guidelines. Students have rated the question in a scale of 0 to 4. The result of this survey is displayed on the college website.

Metric No.	Key Indicator - 2.7 Student Satisfaction Survey
2.7.1	<i>Student Satisfaction Survey (SSS) on overall institutional performance (Institution may design its own questionnaire). Results and details need to be provided as a weblink:</i>
Q <sub>n</sub> M	<i>Note: Data template is not applicable to this metric.</i>



# **NRI INSTITUTE OF TECHNOLOGY**

**AUTONOMOUS**

Accredited : NAAC with "A", NBA (CSE, ECE & EEE)

Approved by AICTE, New Delhi & Permanently affiliated to JNTUK, Kakinada  
Pothavarappadu, Agiripalli Mandalam, Krishna Dt., Andhra Pradesh - 521212

URL : [www.nrigroupofcolleges.ac.in](http://www.nrigroupofcolleges.ac.in), Ph : 0866 2469666, Email : [principal@nriit.edu.in](mailto:principal@nriit.edu.in)



## **REPORT LINK :**

### **Software Name**

**NRIITAPP**

### **LINK MODES( DATA TAKEN FROM):**

INTERNAL SERVER: NRI/ (With in NRI Premises)

EXTERNAL SERVER: 175.101.98.23 (Global)

### **Users**

**Students**

**Student Parents**

**Teaching Staff**

**HODS**

**DEANS**

**PRINCIPAL**

**ADMINISTRTION**

**CHAIRMAN**

**\* Each and Every Member will have user id and password**



# NRI INSTITUTE OF TECHNOLOGY

**AUTONOMOUS**

Accredited : NAAC with "A", NBA (CSE, ECE & EEE)

Approved by AICTE, New Delhi & Permanently affiliated to JNTUK, Kakinada  
Pothavarappadu, Agripalli Mandalam, Krishna Dt., Andhra Pradesh - 521212

URL : www.nrigroupofcolleges.ac.in, Ph : 0866 2469666, Email : principal@nriit.edu.in



## Procedure for Survey taken

### Step :1

NRI INSTITUTE OF TECHNOLOGY  
Approved by AICTE, Affiliated to JNTU-Kakinada. An ISO 9001-2015 Certified

Register >> Login

### Step 2:

User Name:

Password:

Forgot Password Password Change

Unlock  
By submitting, I agree to T&C



# NRI INSTITUTE OF TECHNOLOGY

**AUTONOMOUS**

Accredited : NAAC with "A", NBA (CSE, ECE & EEE)

Approved by AICTE, New Delhi & Permanently affiliated to JNTUK, Kakinada  
Pothavarappadu, Agiripalli Mandalam, Krishna Dt., Andhra Pradesh - 521212

URL : www.nrigroupofcolleges.ac.in, Ph : 0866 2469666, Email : principal@nriit.edu.in

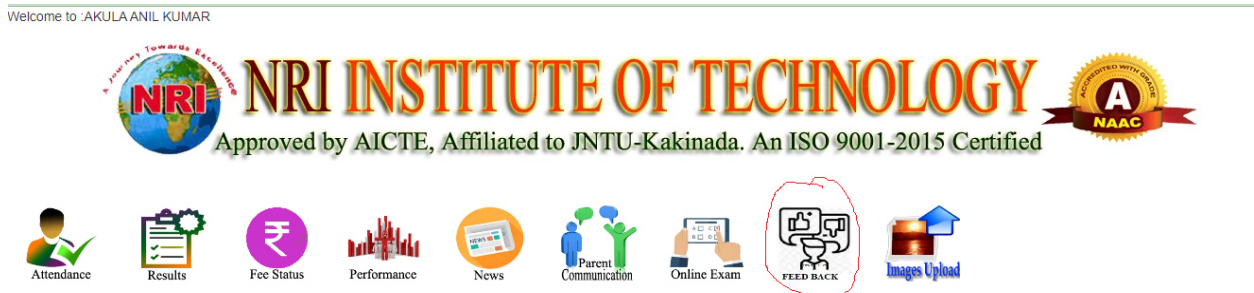


## STEP 3:

### USER AND PARENTS VIEW



## STEP 4:





# NRI INSTITUTE OF TECHNOLOGY

**AUTONOMOUS**

Accredited : NAAC with "A", NBA (CSE, ECE & EEE)

Approved by AICTE, New Delhi & Permanently affiliated to JNTUK, Kakinada  
Pothavarappadu, Agiripalli Mandalam, Krishna Dt., Andhra Pradesh - 521212

URL : www.nrigroupofcolleges.ac.in, Ph : 0866 2469666, Email : principal@nriit.edu.in



## STEP 5

### National Assessment and Accreditation Council (NAAC)- Student Satisfaction Survey

Choose type of feedback

Select Type of Report

## STEP 6

### National Assessment and Accreditation Council (NAAC)- Student Satisfaction Survey

Choose type of feedback

1. Student Satisfaction Survey

#### Student Satisfaction Survey

1) HOW MUCH OF THE SYLLABUS WAS COVERED IN THE CLASS?

Select Range

2) HOW WELL DID THE TEACHERS PREPARE FOR THE CLASSES ?

Select Range

3) HOW WELL WERE THE TEACHERS ABLE TO COMMUNICATE

Select Range

4) THE TEACHER'S APPROACH TO TEACHING CAN BEST BE DESCRIBED AS

Select Range

5) FAIRNESS OF THE INTERNAL EVALUATION PROCESS BY THE TEACHERS

Select Range



# NRI INSTITUTE OF TECHNOLOGY AUTONOMOUS

Accredited : NAAC with "A", NBA (CSE, ECE & EEE)

Approved by AICTE, New Delhi & Permanently affiliated to JNTUK, Kakinada  
Pothavarappadu, Agiripalli Mandalam, Krishna Dt., Andhra Pradesh - 521212

URL : [www.nrigroupofcolleges.ac.in](http://www.nrigroupofcolleges.ac.in), Ph : 0866 2469666, Email : [principal@nriit.edu.in](mailto:principal@nriit.edu.in)



## **STUDENT SATISFACTION SERVEY (SSS)**

### **User Questioner**

#### **1. How much of the syllabus was covered in the class?**

- 4 – 85 to 100%
- 3 – 70 to 84%
- 2 – 55 to 69%
- 1– 30 to 54%
- 0 –Below 30%

#### **2. How well did the teachers prepare for the classes?**

- 4 –Thoroughly
- 3 – Satisfactorily
- 2 – Poorly
- 1 – Indifferently
- 0 – Won't teach at all

#### **3. How well were the teachers able to communicate?**

- 4 – Always effective
- 3 – Sometimes effective
- 2 – Just satisfactorily
- 1– Generally ineffective
- 0– Very poor communication

#### **4. The teacher's approach to teaching can best be described as**

- 4– Excellent
- 3 – Very good
- 2 – Good
- 1 – Fair
- 0– Poor



# NRI INSTITUTE OF TECHNOLOGY AUTONOMOUS

Accredited : NAAC with "A", NBA (CSE, ECE & EEE)

Approved by AICTE, New Delhi & Permanently affiliated to JNTUK, Kakinada  
Pothavarappadu, Agiripalli Mandalam, Krishna Dt., Andhra Pradesh - 521212

URL : [www.nrigroupofcolleges.ac.in](http://www.nrigroupofcolleges.ac.in), Ph : 0866 2469666, Email : [principal@nriit.edu.in](mailto:principal@nriit.edu.in)



## **5. Fairness of the internal evaluation process by the teachers.**

- 4 – Always fair
- 3 – Usually fair
- 2 – Sometimes unfair
- 1 – Usually unfair
- 0 – Unfair

## **6. Was your performance in assignments discussed with you?**

- 4 – Every time
- 3 – Usually
- 2 – Occasionally/Sometimes
- 1 – Rarely
- 0 – Never

## **7. The institute takes active interest in promoting internship, student exchange, field visit opportunities for students.**

- 4 – Regularly
- 3 – Often
- 2 – Sometimes
- 1 – Rarely
- 0 – Never

## **8. The teaching and mentoring process in your institution facilitates you in cognitive, social and emotional growth.**

- 4 – Significantly
- 3 – Very well
- 2 – Moderately
- 1 – Marginally
- 0 – Not at all

## **9. The institution provides multiple opportunities to learn and grow.**

- 4 – Strongly agree
- 3 – Agree
- 2 – Neutral
- 1 – Disagree
- 0 – Strongly disagree





# NRI INSTITUTE OF TECHNOLOGY

**AUTONOMOUS**

Accredited : NAAC with "A", NBA (CSE, ECE & EEE)

Approved by AICTE, New Delhi & Permanently affiliated to JNTUK, Kakinada  
Pothavarappadu, Agiripalli Mandalam, Krishna Dt., Andhra Pradesh - 521212

URL : [www.nrigroupofcolleges.ac.in](http://www.nrigroupofcolleges.ac.in), Ph : 0866 2469666, Email : [principal@nriit.edu.in](mailto:principal@nriit.edu.in)



**10. Teachers inform you about your expected competencies, course outcomes and programme outcomes.**

- 4 – Every time
- 3 – Usually
- 2 – Occasionally/Sometimes
- 1 – Rarely
- 0 – Never

**11. Your mentor does a necessary follow-up with an assigned task to you.**

- 4 – Every time
- 3 – Usually
- 2 – Occasionally/Sometimes
- 1 – Rarely
- 0 – I don't have a mentor

**12. The teachers illustrate the concepts through examples and applications.**

- 4 – Every time
- 3 – Usually
- 2 – Occasionally/Sometimes
- 1 – Rarely
- 0 – Never

**13. The teachers identify your strengths and encourage you with providing right level of challenges.**

- 4 – Fully
- 3 – Reasonably
- 2 – Partially
- 1 – Slightly
- 0 – Unable to

**14. Teachers are able to identify your weaknesses and help you to overcome them.**

- 4 – Every time
- 3 – Usually
- 2 – Occasionally/Sometimes
- 1 – Rarely
- 0 – Never



**NRI INSTITUTE OF TECHNOLOGY**

**AUTONOMOUS**

Accredited : NAAC with "A", NBA (CSE, ECE & EEE)

Approved by AICTE, New Delhi & Permanently affiliated to JNTUK, Kakinada  
Pothavarappadu, Agiripalli Mandalam, Krishna Dt., Andhra Pradesh - 521212

URL : [www.nrigroupofcolleges.ac.in](http://www.nrigroupofcolleges.ac.in), Ph : 0866 2469666, Email : [principal@nriit.edu.in](mailto:principal@nriit.edu.in)



**15. The institution makes effort to engage students in the monitoring, review and continuous quality improvement of the teaching learning process.**

- 4 – Strongly agree
- 3 – Agree
- 2 – Neutral
- 1 – Disagree
- 0 – Strongly disagree

**16. The institute/ teachers use student centric methods, such as experiential learning, participative learning and problem solving methodologies for enhancing learning experiences.**

- 4 – To a great extent
- 3 – Moderate
- 2 – Some what
- 1 – Very little
- 0 – Not at all

**17. Teachers encourage you to participate in extracurricular activities.**

- 4 – Strongly agree
- 3 – Agree
- 2 – Neutral
- 1 – Disagree
- 0 – Strongly disagree

**18. Efforts are made by the institute/ teachers to inculcate soft skills, life skills and employability skills to make you ready for the world of work.**

- 4 – To a great extent
- 3 – Moderate
- 2 – Some what
- 1 – Very little
- 0 – Not at all

**19. What percentage of teachers use ICT tools such as LCD projector, Multimedia, etc. while teaching.**

- 4 – Above 90%
- 3 – 70 – 89%



# NRI INSTITUTE OF TECHNOLOGY

**AUTONOMOUS**

Accredited : NAAC with "A", NBA (CSE, ECE & EEE)

Approved by AICTE, New Delhi & Permanently affiliated to JNTUK, Kakinada  
Pothavarappadu, Agripalli Mandalam, Krishna Dt., Andhra Pradesh - 521212

URL : [www.nrigroupofcolleges.ac.in](http://www.nrigroupofcolleges.ac.in), Ph : 0866 2469666, Email : [principal@nriit.edu.in](mailto:principal@nriit.edu.in)



- 2 – 50 – 69%
- 1 – 30 – 49%
- 0 – Below 29%

**20. The overall quality of teaching-learning process in your institute is very good.**

- 4 – Strongly agree
- 3 – Agree
- 2 – Neutral
- 1 – Disagree
- 0 – Strongly disagree

**21. Give three observation / suggestions to improve the overall teaching – learning experience in your institution.**

- a)
- b)
- c)



# NRI INSTITUTE OF TECHNOLOGY AUTONOMOUS

Accredited : NAAC with "A", NBA (CSE, ECE & EEE)

Approved by AICTE, New Delhi & Permanently affiliated to JNTUK, Kakinada  
Pothavarappadu, Agiripalli Mandalam, Krishna Dt., Andhra Pradesh - 521212

URL : [www.nrigroupofcolleges.ac.in](http://www.nrigroupofcolleges.ac.in), Ph : 0866 2469666, Email : [principal@nriit.edu.in](mailto:principal@nriit.edu.in)



## NRI INSTITUTE OF TECHNOLOGY - STUDENT SATISFACTION SERVEY

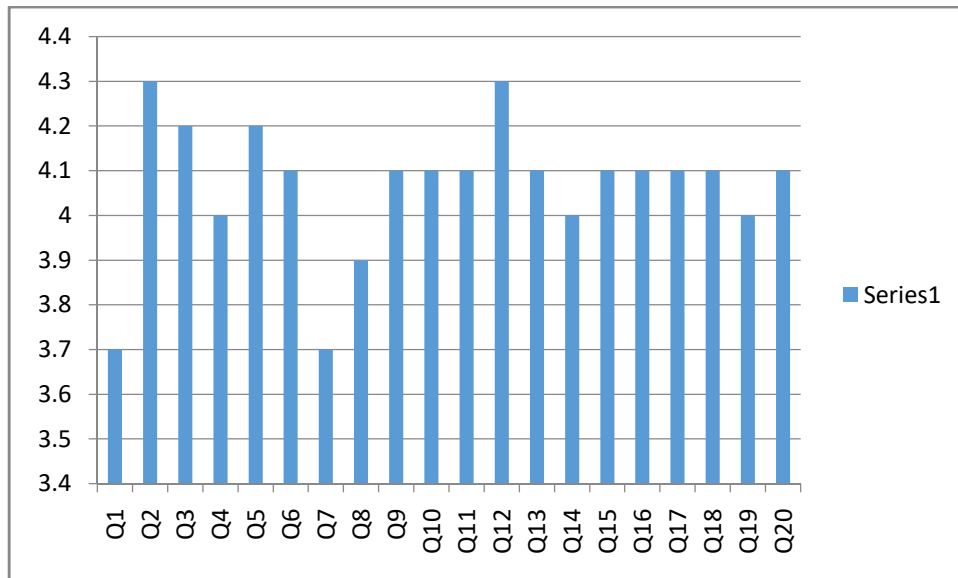
### ACADEMIC YEAR 2017-18

Consolidated Report for the Academic Year 2017-18

AVERAGE ( TOTAL STUDENTS GIVEN : 798 : Total Weightage 5)

Q1	Q2	Q3	Q4	Q5	Q6	Q7	Q8	Q9	Q10
3.7	4.3	4.2	4	4.2	4.1	3.7	3.9	4.1	4.1

Q11	Q12	Q13	Q14	Q15	Q16	Q17	Q18	Q19	Q20
4.1	4.3	4.1	4	4.1	4.1	4.1	4.1	4	4.1





**NRI INSTITUTE OF TECHNOLOGY**

**AUTONOMOUS**

Accredited : NAAC with "A", NBA (CSE, ECE & EEE)

Approved by AICTE, New Delhi & Permanently affiliated to JNTUK, Kakinada  
Pothavarappadu, Agiripalli Mandalam, Krishna Dt., Andhra Pradesh - 521212

URL : [www.nrigroupofcolleges.ac.in](http://www.nrigroupofcolleges.ac.in), Ph : 0866 2469666, Email : [principal@nriit.edu.in](mailto:principal@nriit.edu.in)



### Student's Suggestions

**Observation / suggestions to improve the overall teaching – learning experience in your institution (SAMPLE)**

- NEED TO BE IMPROVED IN OVERALL TEACHING
- internship must be encouraged
- ALL THE FACULTY ARE WELL TEACHING
- OVERALL THE WAY OF TEACHING IS GOOD