



NRI INSTITUTE OF TECHNOLOGY
AUTONOMOUS

Accredited : NAAC with "A", NBA (CSE, ECE & EEE)

Approved by AICTE, New Delhi & Permanently affiliated to JNTUK, Kakinada
Pothavarappadu, Agiripalli Mandalam, Krishna Dt., Andhra Pradesh - 521212

URL : www.nrigroupofcolleges.ac.in, Ph : 0866 2469666, Email : principal@nriit.edu.in



National Assessment and Accreditation Council (NAAC)

Student Satisfaction Survey

Key Indicator - 2.7.1

**Under Criterion II of Teaching – Learning and Evaluation
(From Students)**



NRI INSTITUTE OF TECHNOLOGY

AUTONOMOUS

Accredited : NAAC with "A", NBA (CSE, ECE & EEE)

Approved by AICTE, New Delhi & Permanently affiliated to JNTUK, Kakinada
Pothavarappadu, Agiripalli Mandalam, Krishna Dt., Andhra Pradesh - 521212

URL : www.nrigroupofcolleges.ac.in, Ph : 0866 2469666, Email : principal@nriit.edu.in



NAAC- AQAR (2020-21)

For the NAAC AQAR (2020-21), Students Satisfaction Survey (SSS) was conducted among the students of the college through the college website. The questionnaire has been framed based on NAAC guidelines. Students have rated the question in a scale of 0 to 4. The result of this survey is displayed on the college website.

Metric No.	Key Indicator - 2.7 Student Satisfaction Survey
2.7.1	<i>Student Satisfaction Survey (SSS) on overall institutional performance (Institution may design its own questionnaire). Results and details need to be provided as a weblink:</i>
Q _n M	<i>Note: Data template is not applicable to this metric.</i>



NRI INSTITUTE OF TECHNOLOGY

AUTONOMOUS

Accredited : NAAC with "A", NBA (CSE, ECE & EEE)

Approved by AICTE, New Delhi & Permanently affiliated to JNTUK, Kakinada
Pothavarappadu, Agiripalli Mandalam, Krishna Dt., Andhra Pradesh - 521212

URL : www.nrigroupofcolleges.ac.in, Ph : 0866 2469666, Email : principal@nriit.edu.in



REPORT LINK :

Software Name

NRIITAPP

LINK MODES(DATA TAKEN FROM):

INTERNAL SERVER: NRI/ (With in NRI Premises)

EXTERNAL SERVER: 175.101.98.23 (Global)

Users

Students

Student Parents

Teaching Staff

HODS

DEANS

PRINCIPAL

ADMINISTRTION

CHAIRMAN

*** Each and Every Member will have user id and password**



NRI INSTITUTE OF TECHNOLOGY

AUTONOMOUS

Accredited : NAAC with "A", NBA (CSE, ECE & EEE)

Approved by AICTE, New Delhi & Permanently affiliated to JNTUK, Kakinada
Pothavarappadu, Agripalli Mandalam, Krishna Dt., Andhra Pradesh - 521212

URL : www.nrigroupofcolleges.ac.in, Ph : 0866 2469666, Email : principal@nriit.edu.in



Procedure for Survey taken

Step :1

Register >> Login

Step 2:

User Name: Password: Unlock By submitting, I agree to T&C

Forgot Password Password Change



NRI INSTITUTE OF TECHNOLOGY AUTONOMOUS

Accredited : NAAC with "A", NBA (CSE, ECE & EEE)

Approved by AICTE, New Delhi & Permanently affiliated to JNTUK, Kakinada
Pothavarappadu, Agiripalli Mandalam, Krishna Dt., Andhra Pradesh - 521212

URL : www.nrigroupofcolleges.ac.in, Ph : 0866 2469666, Email : principal@nriit.edu.in



STEP 3:

USER AND PARENTS VIEW

Welcome to :ALA SWATHI SREE

NRI INSTITUTE OF TECHNOLOGY
Approved by AICTE, Affiliated to JNTU-Kakinada. An ISO 9001-2015 Certified

Attendance Results Fee Status Performance News Parent Communication Online Exam FEED BACK Images Upload

Activate Windows
Go to Settings to activate Windows.

Quit Resources Password Updation

Type here to search

23°C Haze ENG 10:19 AM IN 12/22/2021

STEP 4:

Welcome to :AKULA ANIL KUMAR

NRI INSTITUTE OF TECHNOLOGY
Approved by AICTE, Affiliated to JNTU-Kakinada. An ISO 9001-2015 Certified

Attendance Results Fee Status Performance News Parent Communication Online Exam FEED BACK Images Upload

Activate Windows
Go to Settings to activate Windows.

Quit Resources Password Updation

Type here to search

23°C Haze ENG 10:19 AM IN 12/22/2021



NRI INSTITUTE OF TECHNOLOGY

AUTONOMOUS

Accredited : NAAC with "A", NBA (CSE, ECE & EEE)

Approved by AICTE, New Delhi & Permanently affiliated to JNTUK, Kakinada
Pothavarappadu, Agiripalli Mandalam, Krishna Dt., Andhra Pradesh - 521212

URL : www.nrigroupofcolleges.ac.in, Ph : 0866 2469666, Email : principal@nriit.edu.in



STEP 5

National Assessment and Accreditation Council (NAAC)- Student Satisfaction Survey

Choose type of feedback

Select Type of Report

STEP 6

National Assessment and Accreditation Council (NAAC)- Student Satisfaction Survey

Choose type of feedback

1. Student Satisfaction Survey

Student Satisfaction Survey

1) HOW MUCH OF THE SYLLABUS WAS COVERED IN THE CLASS?

Select Range

2) HOW WELL DID THE TEACHERS PREPARE FOR THE CLASSES ?

Select Range

3) HOW WELL WERE THE TEACHERS ABLE TO COMMUNICATE

Select Range

4) THE TEACHER'S APPROACH TO TEACHING CAN BEST BE DESCRIBED AS

Select Range

5) FAIRNESS OF THE INTERNAL EVALUATION PROCESS BY THE TEACHERS

Select Range



NRI INSTITUTE OF TECHNOLOGY AUTONOMOUS

Accredited : NAAC with "A", NBA (CSE, ECE & EEE)

Approved by AICTE, New Delhi & Permanently affiliated to JNTUK, Kakinada
Pothavarappadu, Agiripalli Mandalam, Krishna Dt., Andhra Pradesh - 521212

URL : www.nrigroupofcolleges.ac.in, Ph : 0866 2469666, Email : principal@nriit.edu.in



STUDENT SATISFACTION SURVEY (SSS)

Questionnaire

1. How much of the syllabus was covered in the class?

- 4 – 85 to 100%
- 3 – 70 to 84%
- 2 – 55 to 69%
- 1– 30 to 54%
- 0 –Below 30%

2. How well did the teachers prepare for the classes?

- 4 –Thoroughly
- 3 – Satisfactorily
- 2 – Poorly
- 1 – Indifferently
- 0 – Won't teach at all

3. How well were the teachers able to communicate?

- 4 – Always effective
- 3 – Sometimes effective
- 2 – Just satisfactorily
- 1– Generally ineffective
- 0– Very poor communication

4. The teacher's approach to teaching can best be described as

- 4– Excellent
- 3 – Very good
- 2 – Good
- 1 – Fair
- 0– Poor



NRI INSTITUTE OF TECHNOLOGY AUTONOMOUS

Accredited : NAAC with "A", NBA (CSE, ECE & EEE)

Approved by AICTE, New Delhi & Permanently affiliated to JNTUK, Kakinada
Pothavarappadu, Agiripalli Mandalam, Krishna Dt., Andhra Pradesh - 521212

URL : www.nrigroupofcolleges.ac.in, Ph : 0866 2469666, Email : principal@nriit.edu.in



5. Fairness of the internal evaluation process by the teachers.

- 4 – Always fair
- 3 – Usually fair
- 2 – Sometimes unfair
- 1 – Usually unfair
- 0– Unfair

6. Was your performance in assignments discussed with you?

- 4 – Every time
- 3 – Usually
- 2 – Occasionally/Sometimes
- 1 – Rarely
- 0– Never

7. The institute takes active interest in promoting internship, student exchange, field visit opportunities for students.

- 4 – Regularly
- 3 – Often
- 2 – Sometimes
- 1 – Rarely
- 0– Never

8. The teaching and mentoring process in your institution facilitates you in cognitive, social and emotional growth.

- 4 – Significantly
- 3 – Very well
- 2 – Moderately
- 1 – Marginally
- 0– Not at all



NRI INSTITUTE OF TECHNOLOGY

AUTONOMOUS

Accredited : NAAC with "A", NBA (CSE, ECE & EEE)

Approved by AICTE, New Delhi & Permanently affiliated to JNTUK, Kakinada
Pothavarappadu, Agripalli Mandalam, Krishna Dt., Andhra Pradesh - 521212

URL : www.nrigroupofcolleges.ac.in, Ph : 0866 2469666, Email : principal@nriit.edu.in



9. The institution provides multiple opportunities to learn and grow.

- 4 – Strongly agree
- 3 – Agree
- 2 – Neutral
- 1 – Disagree
- 0– Strongly disagree

10. Teachers inform you about your expected competencies, course outcomes and programme outcomes.

- 4 – Every time
- 3 – Usually
- 2– Occasionally/Sometimes
- 1 – Rarely
- 0– Never

11. Your mentor does a necessary follow-up with an assigned task to you.

- 4 – Every time
- 3 – Usually
- 2 – Occasionally/Sometimes
- 1 – Rarely
- 0 – I don't have a mentor

12. The teachers illustrate the concepts through examples and applications.

- 4 – Every time
- 3 – Usually
- 2 – Occasionally/Sometimes
- 1– Rarely
- 0 – Never



NRI INSTITUTE OF TECHNOLOGY AUTONOMOUS

Accredited : NAAC with "A", NBA (CSE, ECE & EEE)

Approved by AICTE, New Delhi & Permanently affiliated to JNTUK, Kakinada
Pothavarappadu, Agiripalli Mandalam, Krishna Dt., Andhra Pradesh - 521212

URL : www.nrigroupofcolleges.ac.in, Ph : 0866 2469666, Email : principal@nriit.edu.in



13. The teachers identify your strengths and encourage you with providing right level of challenges.

- 4 – Fully
- 3 – Reasonably
- 2 – Partially
- 1 – Slightly
- 0– Unable to

14. Teachers are able to identify your weaknesses and help you to overcome them.

- 4 – Every time
- 3 – Usually
- 2 – Occasionally/Sometimes
- 1 – Rarely
- 0 – Never

15. The institution makes effort to engage students in the monitoring, review and continuous quality improvement of the teaching learning process.

- 4 – Strongly agree
- 3 – Agree
- 2 – Neutral
- 1 – Disagree
- 0 – Strongly disagree

16. The institute/ teachers use student centric methods, such as experiential learning, participative learning and problem solving methodologies for enhancing learning experiences.

- 4 – To a great extent
- 3 – Moderate
- 2 – Some what
- 1 – Very little
- 0 – Not at all



NRI INSTITUTE OF TECHNOLOGY

AUTONOMOUS

Accredited : NAAC with "A", NBA (CSE, ECE & EEE)

Approved by AICTE, New Delhi & Permanently affiliated to JNTUK, Kakinada
Pothavarappadu, Agiripalli Mandalam, Krishna Dt., Andhra Pradesh - 521212

URL : www.nrigroupofcolleges.ac.in, Ph : 0866 2469666, Email : principal@nriit.edu.in



17. Teachers encourage you to participate in extracurricular activities.

- 4 – Strongly agree
- 3 – Agree
- 2 – Neutral
- 1 – Disagree
- 0 – Strongly disagree

18. Efforts are made by the institute/ teachers to inculcate soft skills, life skills and employability skills to make you ready for the world of work.

- 4 – To a great extent
- 3 – Moderate
- 2 – Some what
- 1 – Very little
- 0 – Not at all

19. What percentage of teachers use ICT tools such as LCD projector, Multimedia, etc. while teaching.

- 4 – Above 90%
- 3 – 70 – 89%
- 2 – 50 – 69%
- 1 – 30 – 49%
- 0 – Below 29%

20. The overall quality of teaching-learning process in your institute is very good.

- 4 –Strongly agree
- 3 – Agree
- 2 – Neutral
- 1 – Disagree
- 0 – Strongly disagree

21. Give three observation / suggestions to improve the overall teaching – learning experience in your institution.

- a)
- b)
- c)



NRI INSTITUTE OF TECHNOLOGY AUTONOMOUS

Accredited : NAAC with "A", NBA (CSE, ECE & EEE)

Approved by AICTE, New Delhi & Permanently affiliated to JNTUK, Kakinada
Pothavarappadu, Agiripalli Mandalam, Krishna Dt., Andhra Pradesh - 521212

URL : www.nrigroupofcolleges.ac.in, Ph : 0866 2469666, Email : principal@nriit.edu.in



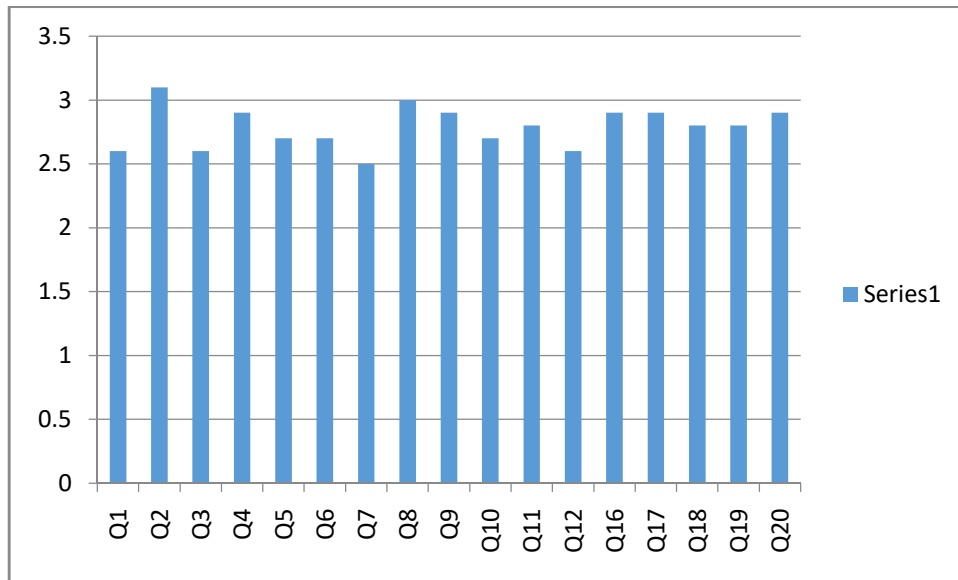
STUDENT SATISFACTION SURVEY

Consolidated Report for the Academic Year 2020-21

AVERAGE (TOTAL STUDENTS GIVEN : 1726 : Total Weightage 5)

Q1	Q2	Q3	Q4	Q5	Q6	Q7	Q8	Q9	Q10
2.6	3.1	2.6	2.9	2.7	2.7	2.5	3.0	2.9	2.7

Q11	Q12	Q13	Q14	Q15	Q16	Q17	Q18	Q19	Q20
2.8	2.6	2.7	2.7	3	2.9	2.9	2.8	2.8	2.9





NRI INSTITUTE OF TECHNOLOGY

AUTONOMOUS

Accredited : NAAC with "A", NBA (CSE, ECE & EEE)

Approved by AICTE, New Delhi & Permanently affiliated to JNTUK, Kakinada
Pothavarappadu, Agiripalli Mandalam, Krishna Dt., Andhra Pradesh - 521212

URL : www.nrigroupofcolleges.ac.in, Ph : 0866 2469666, Email : principal@nriit.edu.in



STUDENT SATISFACTION SERVEY

Consolidated Report for the Academic Year 2020-21

AVERAGE (TOTAL STUDENTS GIVEN : 1726 : Total Weightage 5)

QUESTION	CHOICE 1	CHOICE 2	CHOICE 3	CHOICE 4	CHOICE 5	TOTAL
Q1	627	100	635	200	164	1726
Q2	558	200	161	250	557	1726
Q3	740	150	376	300	160	1726
Q4	446	220	563	175	322	1726
Q5	585	250	345	264	282	1726
Q6	499	300	441	198	288	1726
Q7	581	200	609	200	136	1726
Q8	413	220	526	178	389	1726
Q9	493	225	379	187	442	1726
Q10	553	250	401	198	324	1726
Q11	448	300	446	167	365	1726
Q12	556	325	323	185	337	1726
Q13	438	350	156	285	497	1726
Q14	567	200	366	133	460	1726
Q15	442	247	401	346	290	1726
Q16	436	320	366	356	248	1726
Q17	618	125	399	364	220	1726
Q18	578	200	364	278	306	1726
Q19	434	300	450	265	277	1726
Q20	332	423	324	299	348	1726



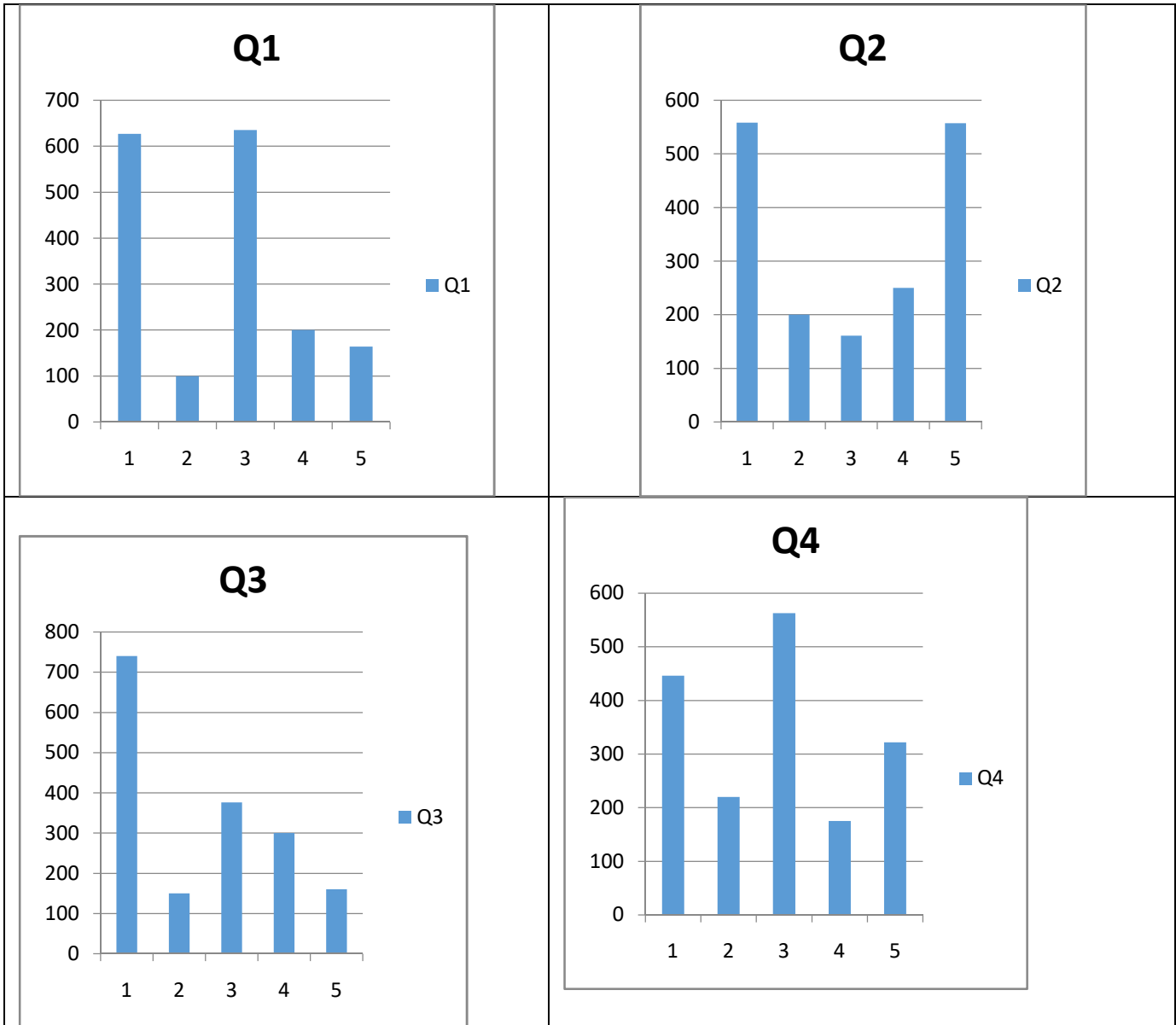
NRI INSTITUTE OF TECHNOLOGY

AUTONOMOUS

Accredited : NAAC with "A", NBA (CSE, ECE & EEE)

Approved by AICTE, New Delhi & Permanently affiliated to JNTUK, Kakinada
Pothavarappadu, Agiripalli Mandalam, Krishna Dt., Andhra Pradesh - 521212

URL : www.nrigroupofcolleges.ac.in, Ph : 0866 2469666, Email : principal@nriit.edu.in





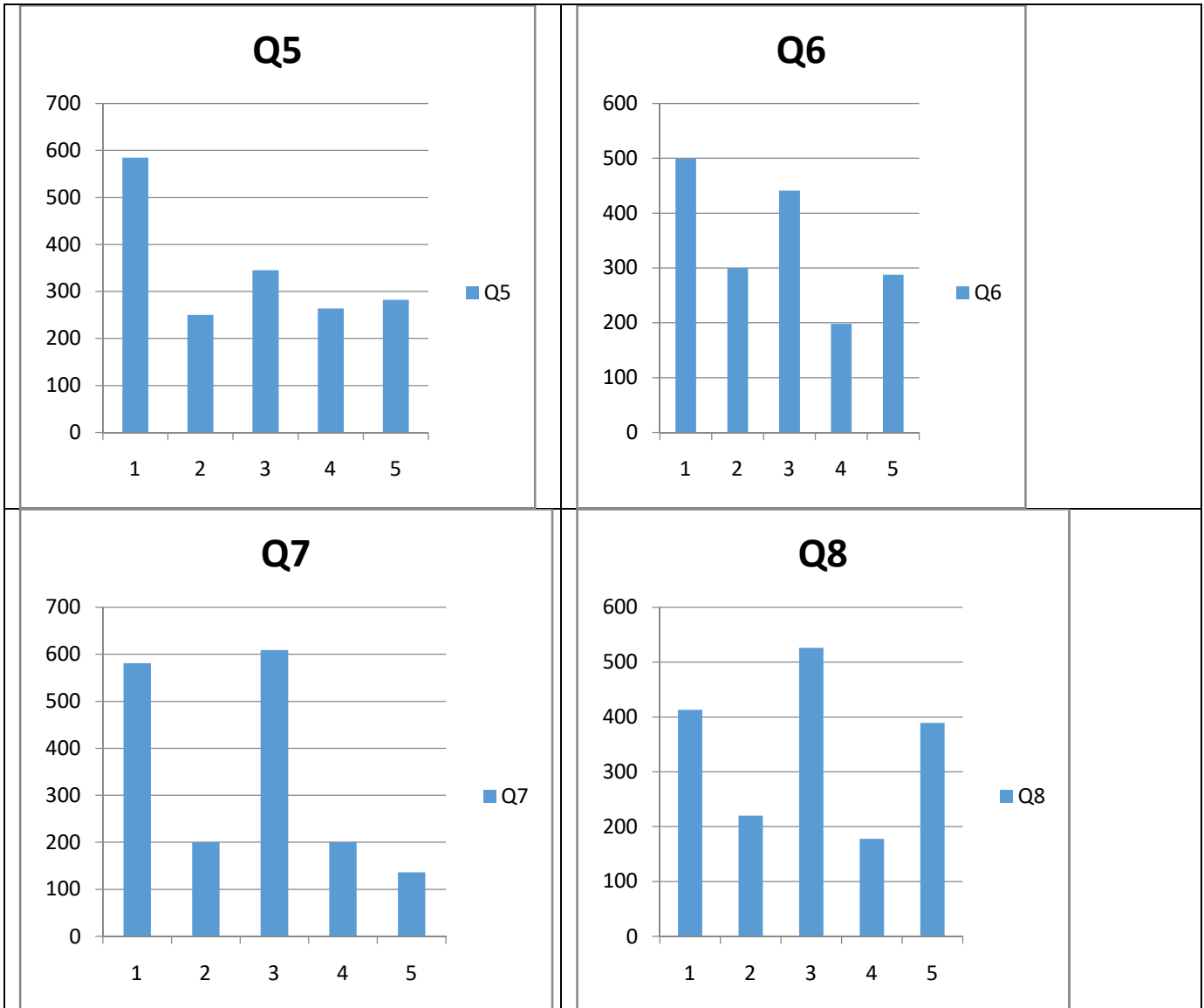
NRI INSTITUTE OF TECHNOLOGY

AUTONOMOUS

Accredited : NAAC with "A", NBA (CSE, ECE & EEE)

Approved by AICTE, New Delhi & Permanently affiliated to JNTUK, Kakinada
Pothavarappadu, Agripalli Mandalam, Krishna Dt., Andhra Pradesh - 521212

URL : www.nrigroupofcolleges.ac.in, Ph : 0866 2469666, Email : principal@nriit.edu.in





NRI INSTITUTE OF TECHNOLOGY

AUTONOMOUS

Accredited : NAAC with "A", NBA (CSE, ECE & EEE)

Approved by AICTE, New Delhi & Permanently affiliated to JNTUK, Kakinada
Pothavarappadu, Agripalli Mandalam, Krishna Dt., Andhra Pradesh - 521212

URL : www.nrigroupofcolleges.ac.in, Ph : 0866 2469666, Email : principal@nriit.edu.in



<h3>Q9</h3> <table border="1"><thead><tr><th>Category</th><th>Value</th></tr></thead><tbody><tr><td>1</td><td>490</td></tr><tr><td>2</td><td>220</td></tr><tr><td>3</td><td>380</td></tr><tr><td>4</td><td>190</td></tr><tr><td>5</td><td>440</td></tr></tbody></table>	Category	Value	1	490	2	220	3	380	4	190	5	440	<h3>Q10</h3> <table border="1"><thead><tr><th>Category</th><th>Value</th></tr></thead><tbody><tr><td>1</td><td>550</td></tr><tr><td>2</td><td>250</td></tr><tr><td>3</td><td>400</td></tr><tr><td>4</td><td>200</td></tr><tr><td>5</td><td>320</td></tr></tbody></table>	Category	Value	1	550	2	250	3	400	4	200	5	320	
Category	Value																									
1	490																									
2	220																									
3	380																									
4	190																									
5	440																									
Category	Value																									
1	550																									
2	250																									
3	400																									
4	200																									
5	320																									
<h3>Q11</h3> <table border="1"><thead><tr><th>Category</th><th>Value</th></tr></thead><tbody><tr><td>1</td><td>450</td></tr><tr><td>2</td><td>300</td></tr><tr><td>3</td><td>450</td></tr><tr><td>4</td><td>170</td></tr><tr><td>5</td><td>370</td></tr></tbody></table>	Category	Value	1	450	2	300	3	450	4	170	5	370	<h3>Q12</h3> <table border="1"><thead><tr><th>Category</th><th>Value</th></tr></thead><tbody><tr><td>1</td><td>550</td></tr><tr><td>2</td><td>320</td></tr><tr><td>3</td><td>320</td></tr><tr><td>4</td><td>190</td></tr><tr><td>5</td><td>340</td></tr></tbody></table>	Category	Value	1	550	2	320	3	320	4	190	5	340	
Category	Value																									
1	450																									
2	300																									
3	450																									
4	170																									
5	370																									
Category	Value																									
1	550																									
2	320																									
3	320																									
4	190																									
5	340																									



NRI INSTITUTE OF TECHNOLOGY

AUTONOMOUS

Accredited : NAAC with "A", NBA (CSE, ECE & EEE)

Approved by AICTE, New Delhi & Permanently affiliated to JNTUK, Kakinada
Pothavarappadu, Agripalli Mandalam, Krishna Dt., Andhra Pradesh - 521212

URL : www.nrigroupofcolleges.ac.in, Ph : 0866 2469666, Email : principal@nriit.edu.in



<h3>Q13</h3> <table border="1"><thead><tr><th>Category</th><th>Value</th></tr></thead><tbody><tr><td>1</td><td>440</td></tr><tr><td>2</td><td>350</td></tr><tr><td>3</td><td>160</td></tr><tr><td>4</td><td>280</td></tr><tr><td>5</td><td>500</td></tr></tbody></table>	Category	Value	1	440	2	350	3	160	4	280	5	500		<h3>Q14</h3> <table border="1"><thead><tr><th>Category</th><th>Value</th></tr></thead><tbody><tr><td>1</td><td>570</td></tr><tr><td>2</td><td>200</td></tr><tr><td>3</td><td>370</td></tr><tr><td>4</td><td>140</td></tr><tr><td>5</td><td>460</td></tr></tbody></table>	Category	Value	1	570	2	200	3	370	4	140	5	460	
Category	Value																										
1	440																										
2	350																										
3	160																										
4	280																										
5	500																										
Category	Value																										
1	570																										
2	200																										
3	370																										
4	140																										
5	460																										
<h3>Q15</h3> <table border="1"><thead><tr><th>Category</th><th>Value</th></tr></thead><tbody><tr><td>1</td><td>440</td></tr><tr><td>2</td><td>250</td></tr><tr><td>3</td><td>400</td></tr><tr><td>4</td><td>350</td></tr><tr><td>5</td><td>290</td></tr></tbody></table>	Category	Value	1	440	2	250	3	400	4	350	5	290		<h3>Q16</h3> <table border="1"><thead><tr><th>Category</th><th>Value</th></tr></thead><tbody><tr><td>1</td><td>440</td></tr><tr><td>2</td><td>320</td></tr><tr><td>3</td><td>370</td></tr><tr><td>4</td><td>360</td></tr><tr><td>5</td><td>250</td></tr></tbody></table>	Category	Value	1	440	2	320	3	370	4	360	5	250	
Category	Value																										
1	440																										
2	250																										
3	400																										
4	350																										
5	290																										
Category	Value																										
1	440																										
2	320																										
3	370																										
4	360																										
5	250																										



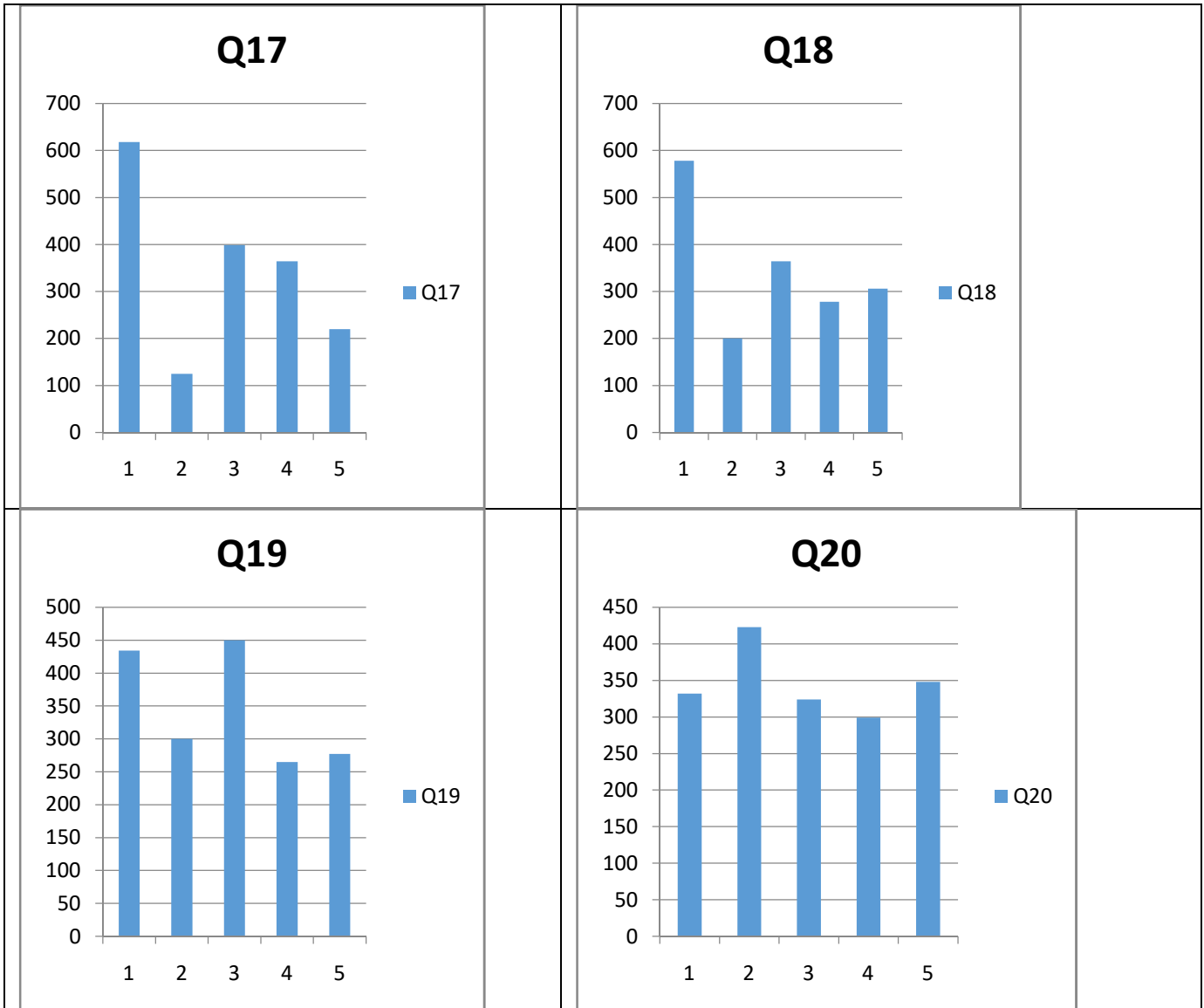
NRI INSTITUTE OF TECHNOLOGY

AUTONOMOUS

Accredited : NAAC with "A", NBA (CSE, ECE & EEE)

Approved by AICTE, New Delhi & Permanently affiliated to JNTUK, Kakinada
Pothavarappadu, Agiripalli Mandalam, Krishna Dt., Andhra Pradesh - 521212

URL : www.nrigroupofcolleges.ac.in, Ph : 0866 2469666, Email : principal@nriit.edu.in





NRI INSTITUTE OF TECHNOLOGY

AUTONOMOUS

Accredited : NAAC with "A", NBA (CSE, ECE & EEE)

Approved by AICTE, New Delhi & Permanently affiliated to JNTUK, Kakinada
Pothavarappadu, Agripalli Mandalam, Krishna Dt., Andhra Pradesh - 521212

URL : www.nrigroupofcolleges.ac.in, Ph : 0866 2469666, Email : principal@nriit.edu.in



Student's Suggestions

Observation / suggestions to improve the overall teaching – learning experience in your institution (SAMPLE)

- complete explanation to complete syllabus
- good teaching faculty.
- EVERY THING WAS GOOD
- Interacting with students daily
- projectors should be used in every classes where necessary

sd/-

Dr.C.Nagabhaskar
I.Q.A.C Chairperson