



NRI INSTITUTE OF TECHNOLOGY AUTONOMOUS

Accredited : NAAC with "A", NBA (CSE, ECE & EEE)

Approved by AICTE, New Delhi & Permanently affiliated to JNTUK, Kakinada
Pothavarappadu, Agiripalli Mandalam, Krishna Dt., Andhra Pradesh - 521212

URL : www.nrigroupofcolleges.ac.in, Ph : 0866 2489886, Email : principal@nriit.edu.in



NRI INSTITUTE OF TECHNOLOGY

INTERNAL QUALITY ASSURANCE CELL

STUDENT SATISFACTION SURVEY (SSS) TAKEN FROM (STUDENTS)

ACADEMIC YEAR 2021- 22

User Questioner

1. How much of the syllabus was covered in the class?

- 4 – 85 to 100%
- 3 – 70 to 84%
- 2 – 55 to 69%
- 1– 30 to 54%
- 0 –Below 30%

2. How well did the teachers prepare for the classes?

- 4 –Thoroughly
- 3 – Satisfactorily
- 2 – Poorly
- 1 – Indifferently
- 0 – Won't teach at all

3. How well were the teachers able to communicate?

- 4 – Always effective
- 3 – Sometimes effective
- 2 – Just satisfactorily
- 1– Generally ineffective
- 0– Very poor communication



NRI INSTITUTE OF TECHNOLOGY

AUTONOMOUS



Accredited : NAAC with "A", NBA (CSE, ECE & EEE)

Approved by AICTE, New Delhi & Permanently affiliated to JNTUK, Kakimada
Pothayarappadu, Agiripalli Mandalam, Krishna Dt., Andhra Pradesh - 521212

URL : www.nrigroupofcolleges.ac.in, Ph : 0866 2469666, Email : principal@nriit.edu.in

4. The teacher's approach to teaching can best be described as

- 4– Excellent
- 3 – Very good
- 2 – Good
- 1 – Fair
- 0– Poor

5. Fairness of the internal evaluation process by the teachers.

- 4 – Always fair
- 3 – Usually fair
- 2 – Sometimes unfair
- 1 – Usually unfair
- 0– Unfair

6. Was your performance in assignments discussed with you?

- 4 – Every time
- 3 – Usually
- 2 – Occasionally/Sometimes
- 1 – Rarely
- 0– Never

7. The institute takes active interest in promoting internship, student exchange, field visit opportunities for students.

- 4 – Regularly
- 3 – Often
- 2 – Sometimes
- 1 – Rarely
- 0– Never

8. The teaching and mentoring process in your institution facilitates you in cognitive, social and emotional growth.

- 4 – Significantly
- 3 – Very well
- 2 – Moderately
- 1 – Marginally
- 0– Not at all



NRI INSTITUTE OF TECHNOLOGY AUTONOMOUS

Accredited : NAAC with "A", NBA (CSE, ECE & EEE)

Approved by AICTE, New Delhi & Permanently affiliated to JNTUK, Kakinada
Pothavarappadu, Agiripalli Mandalam, Krishna Dt., Andhra Pradesh - 521212

URL : www.nrigroupofcolleges.ac.in, Ph : 0866 2469666, Email : principal@nriit.edu.in



9. The institution provides multiple opportunities to learn and grow.

- 4 – Strongly agree
- 3 – Agree
- 2 – Neutral
- 1 – Disagree
- 0 – Strongly disagree

10. Teachers inform you about your expected competencies, course outcomes and programme outcomes.

- 4 – Every time
- 3 – Usually
- 2 – Occasionally/Sometimes
- 1 – Rarely
- 0 – Never

11. Your mentor does a necessary follow-up with an assigned task to you.

- 4 – Every time
- 3 – Usually
- 2 – Occasionally/Sometimes
- 1 – Rarely
- 0 – I don't have a mentor

12. The teachers illustrate the concepts through examples and applications.

- 4 – Every time
- 3 – Usually
- 2 – Occasionally/Sometimes
- 1 – Rarely
- 0 – Never

13. The teachers identify your strengths and encourage you with providing right level of challenges.

- 4 – Fully
- 3 – Reasonably
- 2 – Partially
- 1 – Slightly
- 0 – Unable to



NRI INSTITUTE OF TECHNOLOGY AUTONOMOUS

Accredited : NAAC with "A", NBA (CSE, ECE & EEE)

Approved by AICTE, New Delhi & Permanently affiliated to JNTUK, Kakinada
Pothavarappadu, Agiripalli Mandalam, Krishna Dt., Andhra Pradesh - 521212

URL : www.nrigroupofcolleges.ac.in, Ph : 0866 2469666, Email : principal@nriit.edu.in



14. Teachers are able to identify your weaknesses and help you to overcome them.

- 4 – Every time
- 3 – Usually
- 2 – Occasionally/Sometimes
- 1 – Rarely
- 0 – Never

15. The institution makes effort to engage students in the monitoring, review and continuous quality improvement of the teaching learning process.

- 4 – Strongly agree
- 3 – Agree
- 2 – Neutral
- 1 – Disagree
- 0 – Strongly disagree

16. The institute/ teachers use student centric methods, such as experiential learning, participative learning and problem solving methodologies for enhancing learning experiences.

- 4 – To a great extent
- 3 – Moderate
- 2 – Some what
- 1 – Very little
- 0 – Not at all

17. Teachers encourage you to participate in extracurricular activities.

- 4 – Strongly agree
- 3 – Agree
- 2 – Neutral
- 1 – Disagree
- 0 – Strongly disagree



NRI INSTITUTE OF TECHNOLOGY AUTONOMOUS

Accredited : NAAC with "A", NBA (CSE, ECE & EEE)

Approved by AICTE, New Delhi & Permanently affiliated to JNTUK, Kakinada
Pothavarappadu, Agiripalli Mandalam, Krishna Dt., Andhra Pradesh - 521212

URL : www.nrigroupofcolleges.ac.in, Ph : 0866 2469666, Email : principal@nriit.edu.in



18. Efforts are made by the institute/ teachers to inculcate soft skills, life skills and employability skills to make you ready for the world of work.

- 4 – To a great extent
- 3 – Moderate
- 2 – Some what
- 1 – Very little
- 0 – Not at all

19. What percentage of teachers use ICT tools such as LCD projector, Multimedia, etc. while teaching.

- 4 – Above 90%
- 3 – 70 – 89%
- 2 – 50 – 69%
- 1 – 30 – 49%
- 0 – Below 29%

20. The overall quality of teaching-learning process in your institute is very good.

- 4 – Strongly agree
- 3 – Agree
- 2 – Neutral
- 1 – Disagree
- 0 – Strongly disagree

21. Give three observation / suggestions to improve the overall teaching – learning experience in your institution.

- a)
- b)
- c)


(Dr.C.NagaBhaskar)
Principal
NRI Institute of Technology
Pothavarappadu (V), (Via) Nunna
Agiripalli (M), Eluru Dist. A.P-521212



NRI INSTITUTE OF TECHNOLOGY

AUTONOMOUS

Accredited : NAAC with "A", NBA (CSE, ECE & EEE)

Approved by AICTE, New Delhi & Permanently affiliated to JNTUK, Kakinada
Pothavarappadu, Agiripalli Mandalam, Krishna DL., Andhra Pradesh - 521212

URL : www.nrigroupofcolleges.ac.in, Ph : 0868 2468686, Email : principal@nriit.edu.in



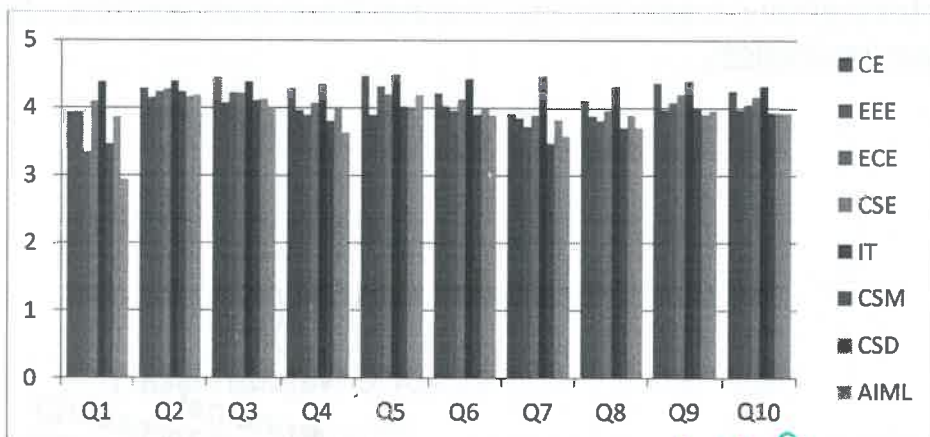
NRI INSTITUTE OF TECHNOLOGY - STUDENT SATISFACTION SERVEY

ACADEMIC YEAR 2021- 22

CONSOLIDATED REPORT

YEAR : First Year

BRANCH	Q1	Q2	Q3	Q4	Q5	Q6	Q7	Q8	Q9	Q10
<u>CE</u>	3.93	4.29	4.46	4.29	4.47	4.22	3.92	4.12	4.37	4.25
<u>EEE</u>	3.94	4.15	4.07	3.96	3.89	4.03	3.85	3.88	3.97	3.97
<u>ECE</u>	3.36	4.24	4.23	3.89	4.32	3.96	3.72	3.81	4.08	4.05
<u>CSE</u>	4.10	4.28	4.22	4.07	4.20	4.13	3.89	3.96	4.20	4.17
<u>IT</u>	4.39	4.40	4.39	4.35	4.49	4.43	4.47	4.32	4.40	4.32
<u>CSM</u>	3.46	4.24	4.11	3.80	4.02	3.90	3.47	3.71	3.99	3.93
<u>CSD</u>	3.87	4.17	4.13	4.00	3.99	4.00	3.82	3.89	3.90	3.93
<u>AIML</u>	2.94	4.18	4.01	3.63	4.19	3.89	3.58	3.71	3.96	3.92



(Dr.C.NagaBhaskar)

Principal

NRI Institute of Technology
Pothavarappadu (V), (Via) Nunna
Eluru Dist. A.P-521212



NRI INSTITUTE OF TECHNOLOGY AUTONOMOUS

Accredited : NAAC with "A", NBA (CSE, ECE & EEE)

Approved by AICTE, New Delhi & Permanently affiliated to JNTUK, Kakinada
Pothavarappadu, Agiripalli Mandalam, Krishna Dt., Andhra Pradesh - 521212

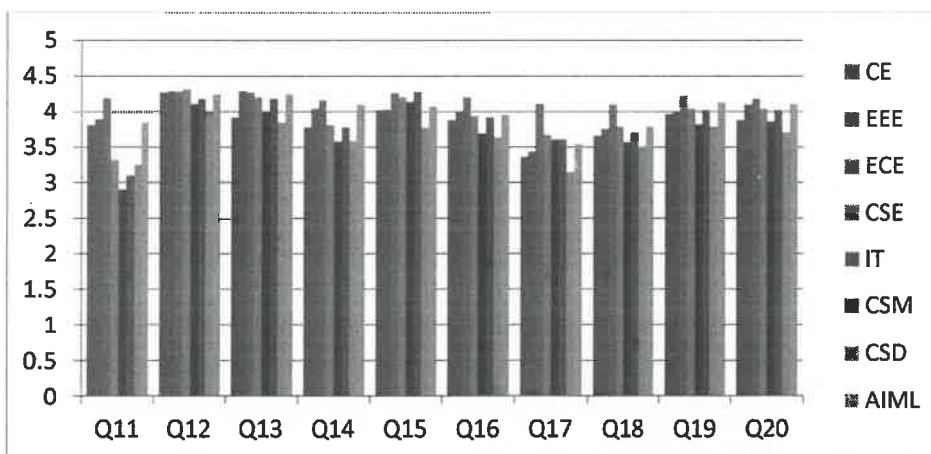
URL : www.nrigroupofcolleges.ac.in, Ph : 0866 2469866, Email : principal@nrriit.edu.in



NRI INSTITUTE OF TECHNOLOGY - STUDENT SATISFACTION SERVEY ACADEMIC YEAR 2021- 22 CONSOLIDATED REPORT

YEAR : First Year

BRANCH	Q11	Q12	Q13	Q14	Q15	Q16	Q17	Q18	Q19	Q20
CE	3.81	4.27	3.92	3.78	4.02	3.88	3.36	3.66	3.97	3.88
EEE	3.89	4.29	4.29	4.04	4.03	4.01	3.44	3.76	4.01	4.10
ECE	4.19	4.28	4.27	4.16	4.26	4.20	4.11	4.10	4.22	4.18
CSE	3.32	4.31	4.20	3.81	4.20	3.94	3.67	3.79	4.04	4.04
IT	2.90	4.11	4.01	3.58	4.14	3.69	3.61	3.57	3.82	3.86
CSM	3.10	4.18	4.18	3.78	4.28	3.92	3.61	3.71	4.02	4.02
CSD	3.25	3.99	3.85	3.59	3.77	3.63	3.15	3.51	3.79	3.70
AIML	3.85	4.24	4.25	4.10	4.07	3.96	3.54	3.79	4.13	4.11



(Dr.C.Naga Bhaskar)

Principal

NRI Institute of Technology
Pothavarappadu (V), (Via) Nunna
Agiripalli (M), Eluru Dist. A.P.



NRI INSTITUTE OF TECHNOLOGY

AUTONOMOUS

Accredited : NAAC with "A", NBA (CSE, ECE & EEE)

Approved by AICTE, New Delhi & Permanently affiliated to JNTUK, Kakinada
Pothavarsipadu, Agiripalli Mandalam, Krishna Dt., Andhra Pradesh - 521212

URL : www.nrigroupofcolleges.ac.in, Ph : 0866 2469866, Email : principal@nrit.edu.in



NRI INSTITUTE OF TECHNOLOGY

INTERNAL QUALITY ASSURANCE CELL

STUDENT SATISFACTION SURVEY (SSS) TAKEN FROM (STUDENTS)

ACADEMIC YEAR 2021- 22

User Questioner

1. How much of the syllabus was covered in the class?

- 4 – 85 to 100%
- 3 – 70 to 84%
- 2 – 55 to 69%
- 1– 30 to 54%
- 0 –Below 30%

2. How well did the teachers prepare for the classes?

- 4 –Thoroughly
- 3 – Satisfactorily
- 2 – Poorly
- 1 – Indifferently
- 0 – Won't teach at all

3. How well were the teachers able to communicate?

- 4 – Always effective
- 3 – Sometimes effective
- 2 – Just satisfactorily
- 1– Generally ineffective
- 0– Very poor communication



NRI INSTITUTE OF TECHNOLOGY AUTONOMOUS

Accredited : NAAC with "A", NBA (CSE, ECE & EEE)

Approved by AICTE, New Delhi & Permanently affiliated to JNTUK, Kakinada
Pothavarappadu, Agiripalli Mandalam, Krishna Dt., Andhra Pradesh - 521212

URL : www.nrigroupofcolleges.ac.in, Ph : 0866 2469666, Email : principal@nriit.edu.in



4. The teacher's approach to teaching can best be described as

- 4- Excellent
- 3 - Very good
- 2 - Good
- 1 - Fair
- 0- Poor

5. Fairness of the internal evaluation process by the teachers.

- 4 - Always fair
- 3 - Usually fair
- 2 - Sometimes unfair
- 1 - Usually unfair
- 0- Unfair

6. Was your performance in assignments discussed with you?

- 4 - Every time
- 3 - Usually
- 2 - Occasionally/Sometimes
- 1 - Rarely
- 0- Never

7. The institute takes active interest in promoting internship, student exchange, field visit opportunities for students.

- 4 - Regularly
- 3 - Often
- 2 - Sometimes
- 1 - Rarely
- 0- Never

8. The teaching and mentoring process in your institution facilitates you in cognitive, social and emotional growth.

- 4 - Significantly
- 3 - Very well
- 2 - Moderately
- 1 - Marginally
- 0- Not at all



NRI INSTITUTE OF TECHNOLOGY

AUTONOMOUS

Accredited : NAAC with "A", NBA (CSE, ECE & EEE)

Approved by AICTE, New Delhi & Permanently affiliated to JNTUK, Kakinada
Pothavareppadu, Agiripalli Mandalam, Krishna DL., Andhra Pradesh - 521212

URL : www.nrigroupofcolleges.ac.in, Ph : 0866 2469866, Email : principal@nrilit.edu.in



9. The institution provides multiple opportunities to learn and grow.

- 4 – Strongly agree
- 3 – Agree
- 2 – Neutral
- 1 – Disagree
- 0 – Strongly disagree

10. Teachers inform you about your expected competencies, course outcomes and programme outcomes.

- 4 – Every time
- 3 – Usually
- 2 – Occasionally/Sometimes
- 1 – Rarely
- 0 – Never

11. Your mentor does a necessary follow-up with an assigned task to you.

- 4 – Every time
- 3 – Usually
- 2 – Occasionally/Sometimes
- 1 – Rarely
- 0 – I don't have a mentor

12. The teachers illustrate the concepts through examples and applications.

- 4 – Every time
- 3 – Usually
- 2 – Occasionally/Sometimes
- 1 – Rarely
- 0 – Never

13. The teachers identify your strengths and encourage you with providing right level of challenges.

- 4 – Fully
- 3 – Reasonably
- 2 – Partially
- 1 – Slightly
- 0 – Unable to



NRI INSTITUTE OF TECHNOLOGY

AUTONOMOUS

Accredited : NAAC with "A", NBA (CSE, ECE & EEE)

Approved by AICTE, New Delhi & Permanently affiliated to JNTUK, Kakinada
Pothavarappadu, Agiripalli Mandalam, Krishna Dt., Andhra Pradesh - 521212

URL : www.nrigroupofcolleges.ac.in, Ph : 0866 2469666, Email : principal@nriit.edu.in



14. Teachers are able to identify your weaknesses and help you to overcome them.

- 4 – Every time
- 3 – Usually
- 2 – Occasionally/Sometimes
- 1 – Rarely
- 0 – Never

15. The institution makes effort to engage students in the monitoring, review and continuous quality improvement of the teaching learning process.

- 4 – Strongly agree
- 3 – Agree
- 2 – Neutral
- 1 – Disagree
- 0 – Strongly disagree

16. The institute/ teachers use student centric methods, such as experiential learning, participative learning and problem solving methodologies for enhancing learning experiences.

- 4 – To a great extent
- 3 – Moderate
- 2 – Some what
- 1 – Very little
- 0 – Not at all

17. Teachers encourage you to participate in extracurricular activities.

- 4 – Strongly agree
- 3 – Agree
- 2 – Neutral
- 1 – Disagree
- 0 – Strongly disagree



NRI INSTITUTE OF TECHNOLOGY

AUTONOMOUS

Accredited : NAAC with "A", NBA (CSE, ECE & EEE)

Approved by AICTE, New Delhi & Permanently affiliated to JNTUK, Kakinada
Pothavarappadu, Agiripalli Mandalam, Krishna Dt., Andhra Pradesh - 521212

URL : www.nrigroupofcolleges.ac.in, Ph : 0866 2469666, Email : principal@nriit.edu.in



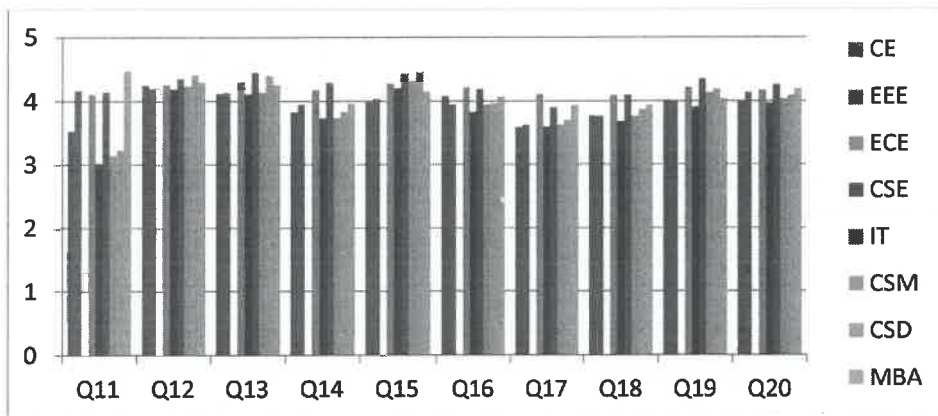
NRI INSTITUTE OF TECHNOLOGY - STUDENT SATISFACTION SERVEY

ACADEMIC YEAR 2021- 22

CONSOLIDATED REPORT

YEAR : Second Year

BRANCH	Q11	Q12	Q13	Q14	Q15	Q16	Q17	Q18	Q19	Q20
CE	3.53	4.25	4.12	3.83	4.00	4.08	3.59	3.77	4.02	4.00
EEE	4.17	4.20	4.13	3.94	4.04	3.94	3.63	3.76	4.01	4.13
ECE	4.11	4.26	4.30	4.18	4.28	4.22	4.11	4.10	4.22	4.17
CSE	3.02	4.19	4.11	3.73	4.20	3.83	3.60	3.68	3.91	3.97
IT	4.14	4.35	4.45	4.29	4.43	4.19	3.90	4.10	4.35	4.26
CSM	3.14	4.24	4.13	3.73	4.32	3.94	3.63	3.76	4.13	4.04
CSD	3.24	4.41	4.40	3.84	4.46	3.96	3.70	3.87	4.19	4.09
MBA	4.48	4.30	4.26	3.96	4.15	4.07	3.93	3.93	4.04	4.19



(Dr.C.NagaBhaskar)

Principal

NRI Institute of Technology
Pothavarappadu (V), (Via) Nunna
Agiripalli (M), Eluru Dist. A.P-521212



NRI INSTITUTE OF TECHNOLOGY AUTONOMOUS

Accredited : NAAC with "A", NBA (CSE, ECE & EEE)

Approved by AICTE, New Delhi & Permanently affiliated to JNTUK, Kakinada
Pothavarappadu, Agiripalli Mandalam, Krishna Dt., Andhra Pradesh - 521212

URL : www.nrigroupofcolleges.ac.in, Ph : 0866 2469666, Email : principal@nrit.edu.in



NRI INSTITUTE OF TECHNOLOGY

INTERNAL QUALITY ASSURANCE CELL

STUDENT SATISFACTION SERVEY (SSS) TAKEN FROM (STUDENTS)

ACADEMIC YEAR 2021- 22

User Questioner

1. How much of the syllabus was covered in the class?

- 4 – 85 to 100%
- 3 – 70 to 84%
- 2 – 55 to 69%
- 1– 30 to 54%
- 0 –Below 30%

2. How well did the teachers prepare for the classes?

- 4 –Thoroughly
- 3 – Satisfactorily
- 2 – Poorly
- 1 – Indifferently
- 0 – Won't teach at all

3. How well were the teachers able to communicate?

- 4 – Always effective
- 3 – Sometimes effective
- 2 – Just satisfactorily
- 1– Generally ineffective
- 0– Very poor communication



NRI INSTITUTE OF TECHNOLOGY

AUTONOMOUS

Accredited : NAAC with "A", NBA (CSE, ECE & EEE)

Approved by AICTE, New Delhi & Permanently affiliated to JNTUK, Kakinada
Pothavarappadu, Agiripalli Mandalam, Krishna Dt., Andhra Pradesh - 521212

URL : www.nrigroupofcolleges.ac.in, Ph : 0866 2469866, Email : principal@nriit.edu.in



4. The teacher's approach to teaching can best be described as

- 4- Excellent
- 3 - Very good
- 2 - Good
- 1 - Fair
- 0- Poor

5. Fairness of the internal evaluation process by the teachers.

- 4 - Always fair
- 3 - Usually fair
- 2 - Sometimes unfair
- 1 - Usually unfair
- 0- Unfair

6. Was your performance in assignments discussed with you?

- 4 - Every time
- 3 - Usually
- 2 - Occasionally/Sometimes
- 1 - Rarely
- 0- Never

7. The institute takes active interest in promoting internship, student exchange, field visit opportunities for students.

- 4 - Regularly
- 3 - Often
- 2 - Sometimes
- 1 - Rarely
- 0- Never

8. The teaching and mentoring process in your institution facilitates you in cognitive, social and emotional growth.

- 4 - Significantly
- 3 - Very well
- 2 - Moderately
- 1 - Marginally
- 0- Not at all



NRI INSTITUTE OF TECHNOLOGY AUTONOMOUS



Accredited : NAAC with "A", NBA (CSE, ECE & EEE)

Approved by AICTE, New Delhi & Permanently affiliated to JNTUK, Kakinada
Pothavareppadu, Agiripalli Mandalam, Krishna Dt., Andhra Pradesh - 521212

URL : www.nrigroupofcolleges.ac.in, Ph : 0866 2469666, Email : principal@nriit.edu.in

9. The institution provides multiple opportunities to learn and grow.

- 4 – Strongly agree
- 3 – Agree
- 2 – Neutral
- 1 – Disagree
- 0 – Strongly disagree

10. Teachers inform you about your expected competencies, course outcomes and programme outcomes.

- 4 – Every time
- 3 – Usually
- 2 – Occasionally/Sometimes
- 1 – Rarely
- 0 – Never

11. Your mentor does a necessary follow-up with an assigned task to you.

- 4 – Every time
- 3 – Usually
- 2 – Occasionally/Sometimes
- 1 – Rarely
- 0 – I don't have a mentor

12. The teachers illustrate the concepts through examples and applications.

- 4 – Every time
- 3 – Usually
- 2 – Occasionally/Sometimes
- 1 – Rarely
- 0 – Never

13. The teachers identify your strengths and encourage you with providing right level of challenges.

- 4 – Fully
- 3 – Reasonably
- 2 – Partially
- 1 – Slightly
- 0 – Unable to



NRI INSTITUTE OF TECHNOLOGY AUTONOMOUS



Accredited : NAAC with "A", NBA (CSE, ECE & EEE)

Approved by AICTE, New Delhi & Permanently affiliated to JNTUK, Kakinada
Pothavarappadu, Agiripalli Mandalam, Krishna Dt., Andhra Pradesh - 521212

URL : www.nrigroupofcolleges.ac.in, Ph : 0866 2469866, Email : principal@nrit.edu.in

14. Teachers are able to identify your weaknesses and help you to overcome them.

- 4 – Every time
- 3 – Usually
- 2 – Occasionally/Sometimes
- 1 – Rarely
- 0 – Never

15. The institution makes effort to engage students in the monitoring, review and continuous quality improvement of the teaching learning process.

- 4 – Strongly agree
- 3 – Agree
- 2 – Neutral
- 1 – Disagree
- 0 – Strongly disagree

16. The institute/ teachers use student centric methods, such as experiential learning, participative learning and problem solving methodologies for enhancing learning experiences.

- 4 – To a great extent
- 3 – Moderate
- 2 – Some what
- 1 – Very little
- 0 – Not at all

17. Teachers encourage you to participate in extracurricular activities.

- 4 – Strongly agree
- 3 – Agree
- 2 – Neutral
- 1 – Disagree
- 0 – Strongly disagree



NRI INSTITUTE OF TECHNOLOGY AUTONOMOUS



Accredited : NAAC with "A", NBA (CSE, ECE & EEE)

Approved by AICTE, New Delhi & Permanently affiliated to JNTUK, Kakinada
Pothavarappadu, Agiripalli Mandalam, Krishna Dt., Andhra Pradesh - 521212

URL : www.nrigroupofcolleges.ac.in, Ph : 0866 2469666, Email : principal@nriit.edu.in

18. Efforts are made by the institute/ teachers to inculcate soft skills, life skills and employability skills to make you ready for the world of work.

- 4 – To a great extent
- 3 – Moderate
- 2 – Some what
- 1 – Very little
- 0 – Not at all

19. What percentage of teachers use ICT tools such as LCD projector, Multimedia, etc. while teaching.

- 4 – Above 90%
- 3 – 70 – 89%
- 2 – 50 – 69%
- 1 – 30 – 49%
- 0 – Below 29%

20. The overall quality of teaching-learning process in your institute is very good.

- 4 – Strongly agree
- 3 – Agree
- 2 – Neutral
- 1 – Disagree
- 0 – Strongly disagree

21. Give three observation / suggestions to improve the overall teaching – learning experience in your institution.

- a)
- b)
- c)

(Dr.C.NagaBhaskar)

Principal

NRI Institute of Technology
Pothavarappadu (V), (Via) Nunna
Agiripalli (M), Eluru Dist. A.P-521212



NRI INSTITUTE OF TECHNOLOGY

AUTONOMOUS

Accredited : NAAC with "A", NBA (CSE, ECE & EEE)

Approved by AICTE, New Delhi & Permanently affiliated to JNTUK, Kakinada
Pothavarappadu, Agiripalli Mandalam, Krishna Dt., Andhra Pradesh - 521212

URL : www.nrigroupofcolleges.ac.in, Ph : 0866 2469666, Email : principal@nrit.edu.in



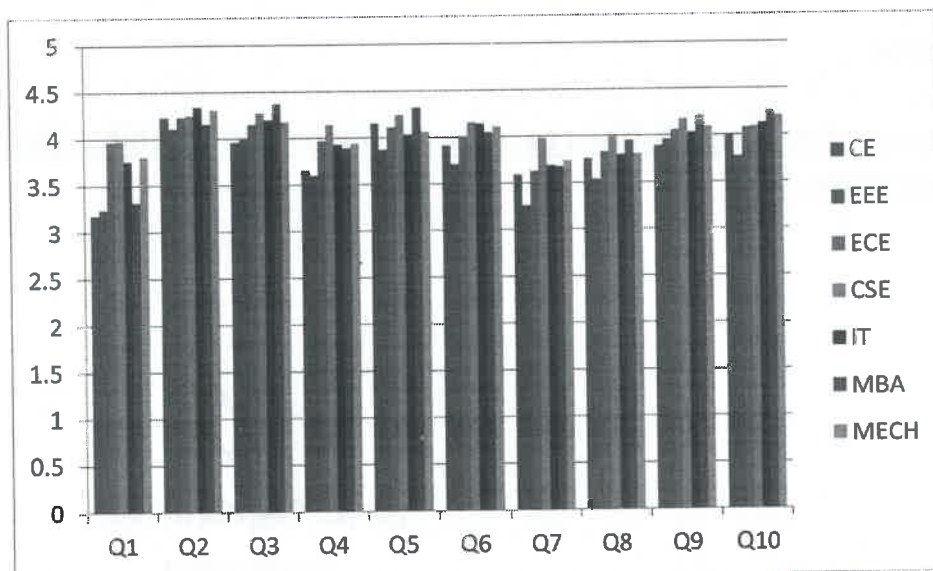
NRI INSTITUTE OF TECHNOLOGY - STUDENT SATISFACTION SURVEY

ACADEMIC YEAR 2021- 22

CONSOLIDATED REPORT

YEAR : Third Year

<u>BRANCH</u>	<u>Q1</u>	<u>Q2</u>	<u>Q3</u>	<u>Q4</u>	<u>Q5</u>	<u>Q6</u>	<u>Q7</u>	<u>Q8</u>	<u>Q9</u>	<u>Q10</u>
<u>CE</u>	3.18	4.23	3.96	3.66	4.15	3.91	3.59	3.76	3.89	4.00
<u>EEE</u>	3.24	4.11	3.99	3.60	3.87	3.71	3.26	3.54	3.96	3.77
<u>ECE</u>	3.97	4.23	4.15	3.97	4.11	3.99	3.63	3.83	4.06	4.08
<u>CSE</u>	3.98	4.25	4.27	4.14	4.24	4.16	3.98	4.01	4.18	4.09
<u>IT</u>	3.76	4.34	4.20	3.93	4.03	4.14	3.69	3.80	4.03	4.13
<u>MBA</u>	3.32	4.16	4.37	3.89	4.32	4.05	3.68	3.95	4.21	4.26
<u>MECH</u>	3.81	4.31	4.18	3.94	4.06	4.11	3.74	3.81	4.09	4.21



(Dr.C.NagaBhaskar)
Principal

NRI Institute of Technology
Pothavarappadu (V), (Via) Nunna
Agiripalli (M), Eluru Dist. A.P-521212



NRI INSTITUTE OF TECHNOLOGY AUTONOMOUS

Accredited : NAAC with "A", NBA (CSE, ECE & EEE)

Approved by AICTE, New Delhi & Permanently affiliated to JNTUK, Kakinada
Pothavarappadu, Agiripalli Mandalam, Krishna Dt., Andhra Pradesh - 521212

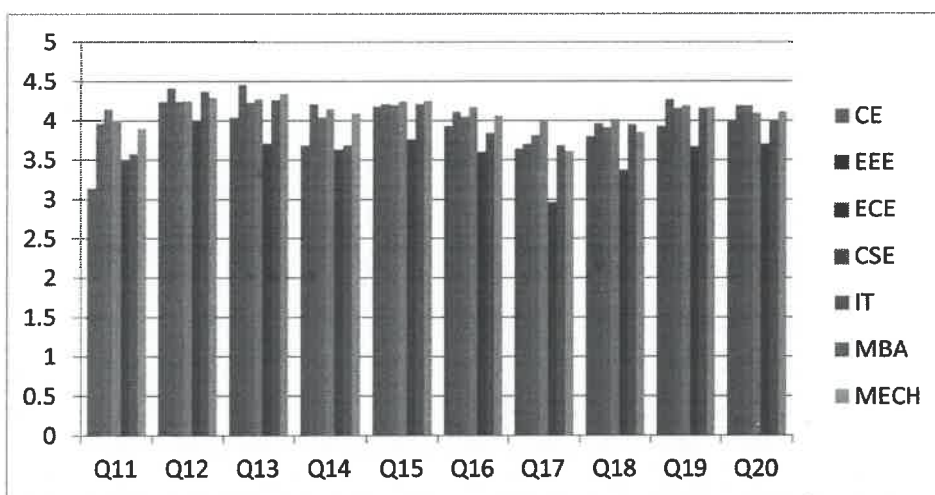
URL : www.nrigroupofcolleges.ac.in, Ph : 0866 2469666, Email : principal@nriit.edu.in



NRI INSTITUTE OF TECHNOLOGY - STUDENT SATISFACTION SERVEY ACADEMIC YEAR 2021- 22 CONSOLIDATED REPORT

YEAR : Third Year

BRANCH	Q11	Q12	Q13	Q14	Q15	Q16	Q17	Q18	Q19	Q20
CE	3.14	4.24	4.04	3.68	4.18	3.93	3.64	3.80	3.93	4.01
EEE	3.96	4.41	4.46	4.21	4.21	4.11	3.70	3.96	4.27	4.19
ECE	4.15	4.24	4.23	4.04	4.20	4.05	3.81	3.91	4.16	4.19
CSE	4.01	4.25	4.27	4.15	4.24	4.17	3.99	4.02	4.19	4.10
IT	3.49	4.00	3.71	3.63	3.76	3.60	2.96	3.37	3.67	3.70
MBA	3.58	4.37	4.26	3.68	4.21	3.84	3.68	3.95	4.16	4.00
MECH	3.90	4.29	4.34	4.09	4.25	4.06	3.61	3.86	4.17	4.11



(Handwritten Signature)

(Dr.C.NagaBhaskar)

Principal

NRI Institute of Technology
Pothavarappadu (V),
Krishna Dt.



NRI INSTITUTE OF TECHNOLOGY
AUTONOMOUS

Accredited : NAAC with "A", NBA (CSE, ECE & EEE)

Approved by AICTE, New Delhi & Permanently affiliated to JNTUK, Kakinada
Pothavarappadu, Agiripalli Mandalam, Krishna Dt., Andhra Pradesh - 521212

URL : www.nrigroupofcolleges.ac.in, Ph : 0866 2469666, Email : principal@nrit.edu.in



NRI INSTITUTE OF TECHNOLOGY

INTERNAL QUALITY ASSURANCE CELL

STUDENT SATISFACTION SERVEY (SSS) TAKEN FROM (STUDENTS)

ACADEMIC YEAR 2021- 22

User Questioner

1. How much of the syllabus was covered in the class?

- 4 – 85 to 100%
- 3 – 70 to 84%
- 2 – 55 to 69%
- 1– 30 to 54%
- 0 –Below 30%

2. How well did the teachers prepare for the classes?

- 4 –Thoroughly
- 3 – Satisfactorily
- 2 – Poorly
- 1 – Indifferently
- 0 – Won't teach at all

3. How well were the teachers able to communicate?

- 4 – Always effective
- 3 – Sometimes effective
- 2 – Just satisfactorily
- 1– Generally ineffective
- 0– Very poor communication



NRI INSTITUTE OF TECHNOLOGY

AUTONOMOUS

Accredited : NAAC with "A", NBA (CSE, ECE & EEE)

Approved by AICTE, New Delhi & Permanently affiliated to JNTUK, Kakinada
Pothavarappadu, Agiripalli Mandalam, Krishna Dt., Andhra Pradesh - 521212

URL : www.nrigroupofcolleges.ac.in, Ph : 0866 2469666, Email : principal@nriit.edu.in



4. The teacher's approach to teaching can best be described as

- 4– Excellent
- 3 – Very good
- 2 – Good
- 1 – Fair
- 0– Poor

5. Fairness of the internal evaluation process by the teachers.

- 4 – Always fair
- 3 – Usually fair
- 2 – Sometimes unfair
- 1 – Usually unfair
- 0– Unfair

6. Was your performance in assignments discussed with you?

- 4 – Every time
- 3 – Usually
- 2 – Occasionally/Sometimes
- 1 – Rarely
- 0– Never

7. The institute takes active interest in promoting internship, student exchange, field visit opportunities for students.

- 4 – Regularly
- 3 – Often
- 2 – Sometimes
- 1 – Rarely
- 0– Never

8. The teaching and mentoring process in your institution facilitates you in cognitive, social and emotional growth.

- 4 – Significantly
- 3 – Very well
- 2 – Moderately
- 1 – Marginally
- 0– Not at all



NRI INSTITUTE OF TECHNOLOGY AUTONOMOUS



Accredited : NAAC with "A", NBA (CSE, ECE & EEE)

Approved by AICTE, New Delhi & Permanently affiliated to JNTUK, Kakinada
Pothavarappadu, Agiripalli Mandalam, Krishna Dt., Andhra Pradesh - 521212

URL : www.nrigroupofcolleges.ac.in, Ph : 0866 2469666, Email : principal@nrit.edu.in

9. The institution provides multiple opportunities to learn and grow.

- 4 – Strongly agree
- 3 – Agree
- 2 – Neutral
- 1 – Disagree
- 0 – Strongly disagree

10. Teachers inform you about your expected competencies, course outcomes and programme outcomes.

- 4 – Every time
- 3 – Usually
- 2 – Occasionally/Sometimes
- 1 – Rarely
- 0 – Never

11. Your mentor does a necessary follow-up with an assigned task to you.

- 4 – Every time
- 3 – Usually
- 2 – Occasionally/Sometimes
- 1 – Rarely
- 0 – I don't have a mentor

12. The teachers illustrate the concepts through examples and applications.

- 4 – Every time
- 3 – Usually
- 2 – Occasionally/Sometimes
- 1 – Rarely
- 0 – Never

13. The teachers identify your strengths and encourage you with providing right level of challenges.

- 4 – Fully
- 3 – Reasonably
- 2 – Partially
- 1 – Slightly
- 0 – Unable to



NRI INSTITUTE OF TECHNOLOGY

AUTONOMOUS

Accredited : NAAC with "A", NBA (CSE, ECE & EEE)

Approved by AICTE, New Delhi & Permanently affiliated to JNTUK, Kakinada
Pothavarappadu, Agiripalli Mandalam, Krishna Dt., Andhra Pradesh - 521212

URL : www.nrigroupofcolleges.ac.in, Ph : 0866 2469666, Email : principal@nrit.edu.in



14. Teachers are able to identify your weaknesses and help you to overcome them.

- 4 – Every time
- 3 – Usually
- 2 – Occasionally/Sometimes
- 1 – Rarely
- 0 – Never

15. The institution makes effort to engage students in the monitoring, review and continuous quality improvement of the teaching learning process.

- 4 – Strongly agree
- 3 – Agree
- 2 – Neutral
- 1 – Disagree
- 0 – Strongly disagree

16. The institute/ teachers use student centric methods, such as experiential learning, participative learning and problem solving methodologies for enhancing learning experiences.

- 4 – To a great extent
- 3 – Moderate
- 2 – Some what
- 1 – Very little
- 0 – Not at all

17. Teachers encourage you to participate in extracurricular activities.

- 4 – Strongly agree
- 3 – Agree
- 2 – Neutral
- 1 – Disagree
- 0 – Strongly disagree



NRI INSTITUTE OF TECHNOLOGY AUTONOMOUS

Accredited : NAAC with "A", NBA (CSE, ECE & EEE)

Approved by AICTE, New Delhi & Permanently affiliated to JNTUK, Kakinada
Pothavarappadu, Agiripalli Mandalam, Krishna Dt., Andhra Pradesh - 521212

URL : www.nrigroupofcolleges.ac.in, Ph : 0866 2469666, Email : principal@nriit.edu.in



18. Efforts are made by the institute/ teachers to inculcate soft skills, life skills and employability skills to make you ready for the world of work.

4 – To a great extent

3 – Moderate

2 – Some what

1 – Very little

0 – Not at all

19. What percentage of teachers use ICT tools such as LCD projector, Multimedia, etc. while teaching.

4 – Above 90%

3 – 70 – 89%

2 – 50 – 69%

1 – 30 – 49%

0 – Below 29%

20. The overall quality of teaching-learning process in your institute is very good.

4 – Strongly agree

3 – Agree

2 – Neutral

1 – Disagree

0 – Strongly disagree

21. Give three observation / suggestions to improve the overall teaching – learning experience in your institution.

a)

b)

c)

(Dr.C.NagaBhaskar)

Principal
NRI Institute of Technology
Pothavarappadu (V), (Via) Nunna
Agiripalli (M), Eluru Dist. A.P-521212



NRI INSTITUTE OF TECHNOLOGY

AUTONOMOUS

Accredited : NAAC with "A", NBA (CSE, ECE & EEE)

Approved by AICTE, New Delhi & Permanently affiliated to JNTUK, Kakinada
Pothavarappadu, Agiripalli Mandalam, Krishna Dt., Andhra Pradesh - 521212

URL : www.nrigroupofcolleges.ac.in, Ph : 0866 2469866, Email : principal@nriit.edu.in



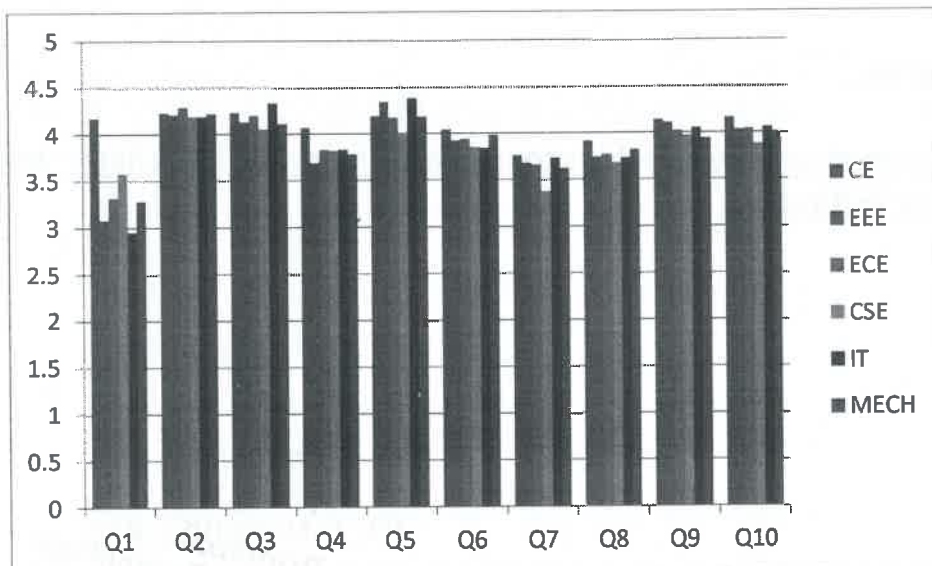
NRI INSTITUTE OF TECHNOLOGY - STUDENT SATISFACTION SERVEY

ACADEMIC YEAR 2021- 22

CONSOLIDATED REPORT

YEAR : Fourth Year

BRANCH	Q1	Q2	Q3	Q4	Q5	Q6	Q7	Q8	Q9	Q10
<u>CE</u>	4.17	4.23	4.23	4.07	4.19	4.04	3.76	3.91	4.14	4.16
<u>EEE</u>	3.08	4.21	4.13	3.69	4.34	3.92	3.68	3.74	4.11	4.03
<u>ECE</u>	3.32	4.29	4.20	3.83	4.17	3.94	3.66	3.77	4.02	4.04
<u>CSE</u>	3.58	4.19	4.05	3.82	3.99	3.85	3.37	3.68	3.97	3.88
<u>IT</u>	2.95	4.19	4.33	3.83	4.38	3.84	3.73	3.73	4.05	4.06
<u>MECH</u>	3.28	4.22	4.11	3.78	4.18	3.98	3.62	3.82	3.94	4.01



(Dr. C. Nagabhaskar)
Principal
NRI Institute of Technology
Pothavarappadu (V), (Via) Nunna
Agiripalli (M), Eluru Dist. A.P. 521212



NRI INSTITUTE OF TECHNOLOGY

AUTONOMOUS

Accredited : NAAC with "A", NBA (CSE, ECE & EEE)

Approved by AICTE, New Delhi & Permanently affiliated to JNTUK, Kakinada
Pothavarappadu, Agiripalli Mandalam, Krishna Dt., Andhra Pradesh - 521212

URL : www.nrigroupofcolleges.ac.in, Ph : 0866 2469886, Email : principal@nriit.edu.in



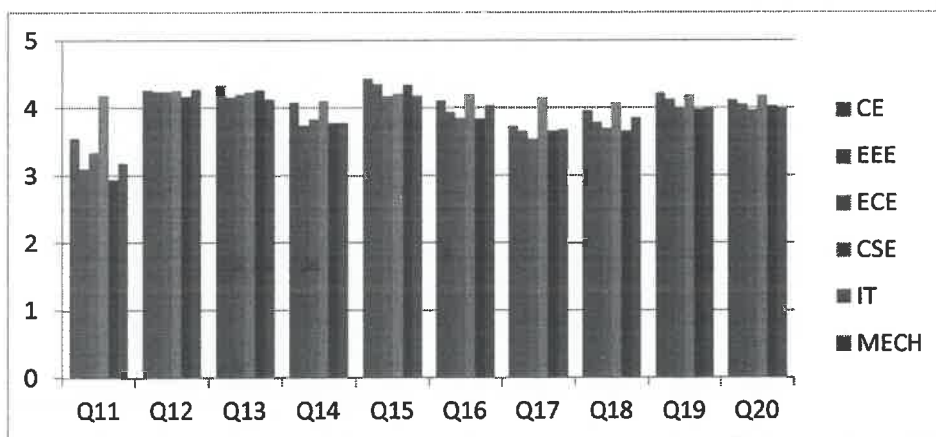
NRI INSTITUTE OF TECHNOLOGY - STUDENT SATISFACTION SERVEY

ACADEMIC YEAR 2021- 22

CONSOLIDATED REPORT

YEAR : Fourth Year

BRANCH	Q11	Q12	Q13	Q14	Q15	Q16	Q17	Q18	Q19	Q20
CE	3.55	4.27	4.33	4.08	4.43	4.11	3.73	3.96	4.22	4.12
EEE	3.10	4.24	4.16	3.74	4.35	3.94	3.66	3.79	4.13	4.05
ECE	3.34	4.24	4.20	3.83	4.17	3.85	3.54	3.70	3.99	3.97
CSE	4.19	4.26	4.23	4.11	4.21	4.19	4.15	4.07	4.18	4.18
IT	2.94	4.17	4.27	3.78	4.34	3.84	3.66	3.66	3.98	4.03
MECH	3.18	4.28	4.13	3.78	4.18	4.04	3.68	3.86	4.01	3.99



(Dr.C.NagaBhaskar)
Principal

NRI Institute of Technology
Pothavarappadu (V), (Via) Nunnuru
Eluru Dist. A.P-521212



NRI INSTITUTE OF TECHNOLOGY AUTONOMOUS

Accredited : NAAC with "A", NBA (CSE, ECE & EEE)

Approved by AICTE, New Delhi & Permanently affiliated to JNTUK, Kakinada
Pothavarappadu, Agiripalli Mandalam, Krishna Dt., Andhra Pradesh - 521212

URL : www.nrigroupofcolleges.ac.in, Ph : 0866 2469666, Email : principal@nriit.edu.in



18. Efforts are made by the institute/ teachers to inculcate soft skills, life skills and employability skills to make you ready for the world of work.

- 4 – To a great extent
- 3 – Moderate
- 2 – Some what
- 1 – Very little
- 0 – Not at all

19. What percentage of teachers use ICT tools such as LCD projector, Multimedia, etc. while teaching.

- 4 – Above 90%
- 3 – 70 – 89%
- 2 – 50 – 69%
- 1 – 30 – 49%
- 0 – Below 29%

20. The overall quality of teaching-learning process in your institute is very good.

- 4 – Strongly agree
- 3 – Agree
- 2 – Neutral
- 1 – Disagree
- 0 – Strongly disagree

21. Give three observation / suggestions to improve the overall teaching – learning experience in your institution.

- a)
- b)
- c)

(Dr.C.NagaBhaskar)

Principal

NRI Institute of Technology
Pothavarappadu (V), (Via) Nunn
Agiripalli (M), Eluru Dist. A.P-521212



NRI INSTITUTE OF TECHNOLOGY

AUTONOMOUS

Accredited : NAAC with "A", NBA (CSE, ECE & EEE)

Approved by AICTE, New Delhi & Permanently affiliated to JNTUK, Kakinada
Pothavarappadu, Agiripalli Mandalam, Krishna Dt., Andhra Pradesh - 521212

URL : www.nrigroupofcolleges.ac.in, Ph : 0866 2469866, Email : principal@nriit.edu.in



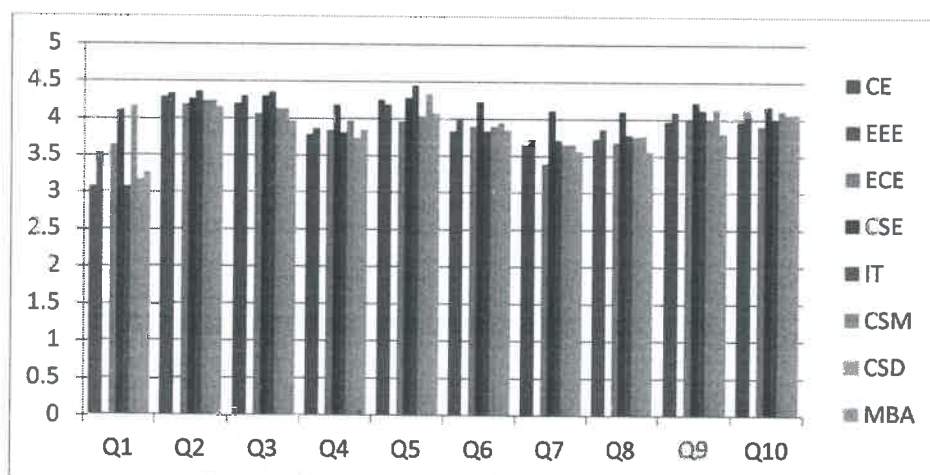
NRI INSTITUTE OF TECHNOLOGY - STUDENT SATISFACTION SERVEY

ACADEMIC YEAR 2021- 22

CONSOLIDATED REPORT

YEAR : Second Year

BRANCH	Q1	Q2	Q3	Q4	Q5	Q6	Q7	Q8	Q9	Q10
<u>CE</u>	3.07	4.29	4.20	3.78	4.25	3.83	3.66	3.73	3.97	3.97
<u>EEE</u>	3.54	4.33	4.30	3.86	4.19	4.01	3.73	3.86	4.09	4.14
<u>ECE</u>	3.63	4.19	4.06	3.84	3.96	3.90	3.39	3.69	3.99	3.91
<u>CSE</u>	4.10	4.26	4.30	4.18	4.28	4.23	4.11	4.10	4.22	4.17
<u>IT</u>	3.07	4.36	4.35	3.81	4.45	3.83	3.71	3.78	4.12	4.00
<u>CSM</u>	4.15	4.23	4.13	3.97	4.03	3.90	3.65	3.76	4.01	4.11
<u>CSD</u>	3.16	4.24	4.13	3.73	4.33	3.94	3.66	3.77	4.14	4.06
<u>MBA</u>	3.26	4.15	3.96	3.85	4.07	3.85	3.56	3.56	3.81	4.07



(Dr.C.NagaBhaskar)

Principal
NRI Institute of Technology
Pothavarappadu (V), (Via) Nunna
(M), Eluru Dist. A.P-521212